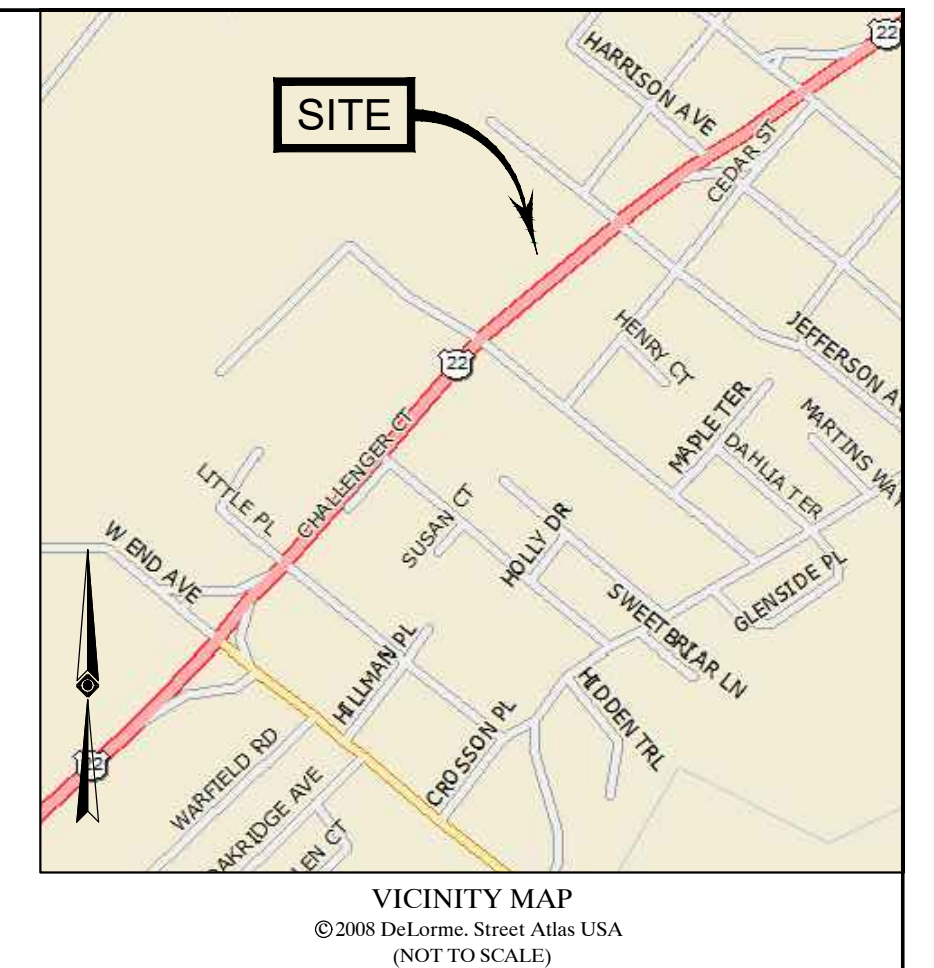
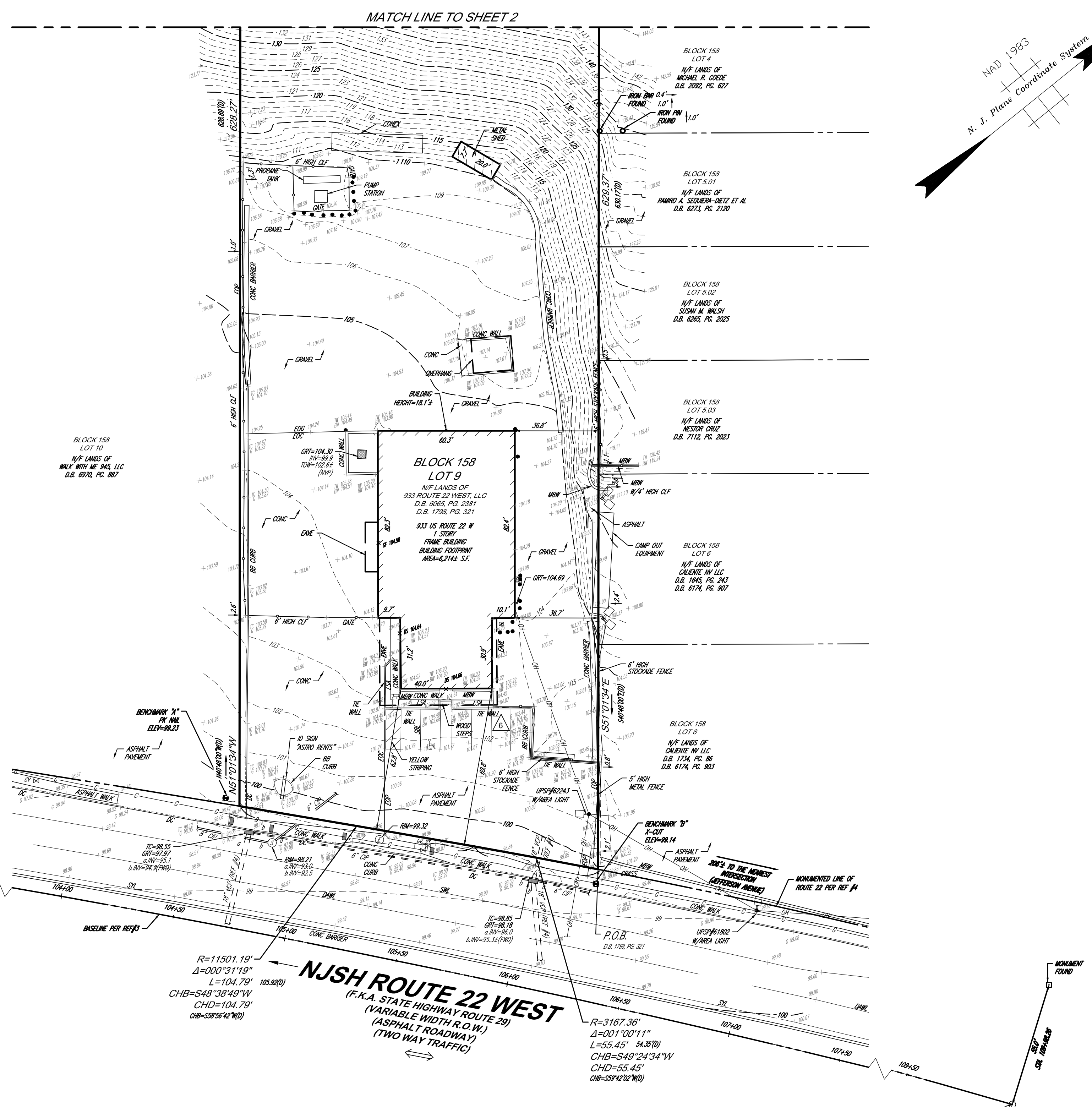


LEGEND			
124	EXISTING CONTOUR	GUY WIRE	
+ 125.45	EXISTING SPOT ELEVATION	STREET LIGHT	
+ TC 125.45	EXIST. TOP OF CURB ELEVATION	TRAFFIC SIGNAL POLE	
+ BC 122.95	EXIST. BOTTOM OF CURB ELEVATION	TRAFFIC SIGNAL	
+ DS 123.45	EXIST. DOOR SILL ELEVATION	PAINTED ARROWS	
+ GF 123.45	EXIST. GARAGE FLOOR ELEVATION	SIGN	
RIM=125.00	RIM NAVD 88	STREET SIGN	
INV=123.0	INV. NAVD 88	BOLLARD/SIGN	
OH	OVERHEAD WIRES	BOLLARD	
E	APPROX. LOC. UNDERGROUND ELECTRIC LINE	METAL GUIDE RAIL	
S	APPROX. LOC. UNDERGROUND SANITARY LINE	AREA LIGHT	
D	APPROX. LOC. UNDERGROUND DRAINAGE LINE	BUILDING LIGHT	
T	APPROX. LOC. UNDERGROUND TELEPHONE LINE	AREA LAMP	
W	APPROX. LOC. UNDERGROUND WATER LINE	CATCH BASIN OR INLET	
G	APPROX. LOC. UNDERGROUND NATURAL GAS LINE	FLOW DIRECTION	
-0a	SUBSURFACE UTILITY QUALITY LEVEL A	992C	STEEL FACED CONC. CURB
-0b	SUBSURFACE UTILITY QUALITY LEVEL B	0F	CHAIN LINK FENCE
-0c	SUBSURFACE UTILITY QUALITY LEVEL C	DC	DEPRESSED CURB
-0d	SUBSURFACE UTILITY QUALITY LEVEL D	EC	EDGE OF CONC.
	DEPRESSED CURB	EP	EDGE OF PAVEMENT
	HYDRANT	GV	GUTTER LINE
WV	WATER VALVE	LSA	LANDSCAPED AREA
WM	WATER METER	MC	METAL COVER
ACU	AIR CONDITIONING UNIT	(TP)	TYPICAL
GV	GAS VALVE	NV	NO VISIBLE PIPE
GB	GAS BOX	UNOBT	UNOBTAINABLE
GM	GAS METER	FD	FILLED w/DEBRIS
EM	ELECTRIC METER	TD	TOP OF DEBRIS
EB	ELECTRIC BOX	RC	REINFORCED CONCRETE PIPE
UMH	UNKNOWN MANHOLE	CI	CAST IRON PIPE
SMH	SANITARY/SEWER MANHOLE	VCP	VITRIFIED CLAY PIPE
DMH	DRAINAGE/STORM MANHOLE	SBH	STONE BOUND W/DRILL HOLE
EMH	ELECTRIC MANHOLE	CBH	CONC. BOUND W/DRILL HOLE
TMH	TELEPHONE MANHOLE	MON	MONUMENT
WMH	WATER MANHOLE	DHF	DRILL HOLE FOUND
WW	WATER WELL	EL	ELEVATION
POST	POST	T.O.	OFFSET OF STRUCTURE AT GROUND LEVEL RELATIVE TO PROPERTY LINE
DWP	DETECTABLE WARNING PAD	(D)	DEED DIMENSION
UP	UTILITY POLE	NJSH	NEW JERSEY STATE HIGHWAY
ULPSP	UTILITY POLE/LIGHT POLE	UNKN	UNKNOWN TERMINUS
PC	PARKING SPACE COUNT	E	EVIDENCE FOUND



- NOTES:**
- PROPERTY KNOWN AS LOT 158, BLOCK 9, AS SHOWN ON THE OFFICIAL TAX MAP OF NORTH PLAINFIELD, SOMERSET COUNTY, NEW JERSEY.
 - AREA = 99,197 SQUARE FEET OR 2.277 ACRES.
 - LOCATION OF UNDERGROUND UTILITIES ARE APPROXIMATE. LOCATIONS AND SIZES ARE BASED ON UTILITY MARK-OUTS ABOVE GROUND STRUCTURES THAT WERE VISIBLE & ACCESSIBLE IN THE FIELD, AND THE MAPS AS LISTED IN THE REFERENCES AVAILABLE AT THE TIME OF THE SURVEY. AVAILABLE ASBUILT PLANS AND UTILITY MARKOUT DOES NOT ENSURE MAPPING OF ALL UNDERGROUND UTILITIES AND STRUCTURES. BEFORE ANY EXCAVATION IS TO BEGIN, ALL UNDERGROUND UTILITIES SHOULD BE VERIFIED AS TO THEIR LOCATION, SIZE AND TYPE BY THE PROPER UTILITY COMPANIES. CONTROL POINT ASSOCIATES, INC. DOES NOT GUARANTEE THE UTILITIES SHOWN COMPRISE ALL SUCH UTILITIES IN THE AREA EITHER IN SERVICE OR ABANDONED.
- THE SOURCE OF UNDERGROUND UTILITIES ARE SHOWN UTILIZING A QUALITY LEVEL SYSTEM:
- QUALITY LEVEL D - UTILITIES SHOWN BASED UPON REFERENCE MAPPING OR ORAL HISTORY. NOT FIELD VERIFIED.
 - QUALITY LEVEL C - LOCATION OF UTILITY SURFACE FEATURES SUPPLEMENTS REFERENCE MAPPING. INCLUDES MARKOUT BY OTHERS.
 - QUALITY LEVEL B - UTILITY LOCATION DATA IS COLLECTED THROUGH GEOPHYSICAL SENSING TECHNOLOGY TO SUPPLEMENT SURFACE FEATURES AND OR REFERENCE MAPPING. INCLUDES MARKOUT BY CONTROL POINT ASSOCIATES, INC.
 - QUALITY LEVEL A - HORIZONTAL AND VERTICAL LOCATION OF UTILITIES ARE OBTAINED USING VACUUM EQUIPMENT EXCAVATION OR OTHER METHODS TO EXPOSE THE UTILITY. LOCATION SHOWN AT SINGLE POINT WHERE EXCAVATION OCCURRED UNLESS UTILITY WAS LOCATED PRIOR TO FILLING.
- THIS PLAN IS BASED ON INFORMATION PROVIDED BY CLIENT, A SURVEY PREPARED IN THE FIELD BY CONTROL POINT ASSOCIATES, INC. AND OTHER REFERENCE MATERIAL AS LISTED HEREON.
 - THIS SURVEY IS PREPARED WITH REFERENCE TO A REPORT OF TITLE PREPARED BY TWO RIVERS TITLE COMPANY LLC, FILE NO. TR212676, WITH AN EFFECTIVE DATE OF 05/12/21. WHERE NO SURVEY RELATED EXCEPTIONS APPEAR.
 - BY GRAPHIC PLOTTING ONLY PROPERTY IS LOCATED IN FLOOD ZONE X (OTHER AREAS) (AREAS DETERMINED TO BE OUTSIDE THE 0.2% ANNUAL CHANCE FLOODPLAIN) PER REF. #2.
 - THE EXISTENCE OF UNDERGROUND STORAGE TANKS, IF ANY, WAS NOT KNOWN AT THE TIME OF THE FIELD SURVEY.
 - ELEVATIONS REFER TO THE NORTH AMERICAN VERTICAL DATUM OF 1988 (NAVD88), BASED ON GPS OBSERVATIONS UTILIZING THE KEYSTONE VRS NETWORK (KEYNETGPS).
 TEMPORARY BENCHMARK SET:
 TBM-A: PK NAIL SET IN THE ASPHALT PAVEMENT PARKING LOT WEST OF PROPERTY
 ELEVATION= 99.23'
 TBM-B: X-CUT IN IN THE CONCRETE WALK ALONG THE EASTERN ENTRANCE TO THE PROPERTY
 ELEVATION= 99.14'
 - PRIOR TO CONSTRUCTION IT IS THE CONTRACTOR'S RESPONSIBILITY TO VERIFY THAT THE BENCHMARKS ILLUSTRATED ON THIS SKETCH HAVE NOT BEEN DISTURBED AND THEIR ELEVATIONS HAVE BEEN CONFIRMED. ANY CONFLICTS MUST BE REPORTED PRIOR TO CONSTRUCTION.
 - THE OFFSETS SHOWN ARE NOT TO BE USED FOR THE CONSTRUCTION OF ANY STRUCTURE, FENCE, PERMANENT ADDITION, ETC.
 - A WRITTEN WAIVER AND DIRECTION NOT TO SET CORNER MARKERS HAS BEEN OBTAINED FROM THE ULTIMATE USER PURSUANT TO P.L. 2003, C. 14 (N.J.S.A. 45-9-36.3) AND N.J.A.C. 13-40-5.1 (d).

- REFERENCES:**
- THE OFFICIAL TAX ASSESSOR'S MAP OF BOROUGH OF NORTH PLAINFIELD, SOMERSET COUNTY, NEW JERSEY, SHEET #47.
 - MAP ENTITLED "NATIONAL FLOOD INSURANCE PROGRAM, FIRM, FLOOD INSURANCE RATE MAP, SOMERSET COUNTY, NEW JERSEY, (ALL JURISDICTIONS), PANEL 177 OF 301", MAP NUMBER 34035C0177E, EFFECTIVE DATE: SEPTEMBER 28, 2007.
 - MAP ENTITLED "ENTIRE TRACT MAP - ROUTE U.S. (1953) SECTION 11 - KING GEORGE ROAD TO GREEN BROOK" RE: BOROUGH OF NORTH PLAINFIELD, COUNTY OF SOMERSET, PREPARED BY URBAN ENGINEERS, INC FOR THE NEW JERSEY DEPARTMENT OF TRANSPORTATION, DATED OCTOBER, 2010.
 - MAP ENTITLED "ROUTE 29 (1927) SECTION 9 WIDENING, WASHINGTON AVE. TO UNION COUNTY LINE" RE: TOWNSHIP OF GREEN BROOK AND BOROUGH OF NORTH PLAINFIELD & WYCKING, COUNTY OF SOMERSET, PREPARED BY THE NEW JERSEY STATE HIGHWAY DEPARTMENT, DATED OCTOBER, 1937, SHOWING STATIONS 85+00-115+00.

CONTROL POINT ASSOCIATES, INC. - ALL RIGHTS RESERVED. ORIGINAL PROJECT OR THE PURPOSE ORIGINALLY INTENDED, WITHOUT THE WRITTEN PERMISSION OF CONTROL POINT ASSOCIATES, INC. IS PROHIBITED.



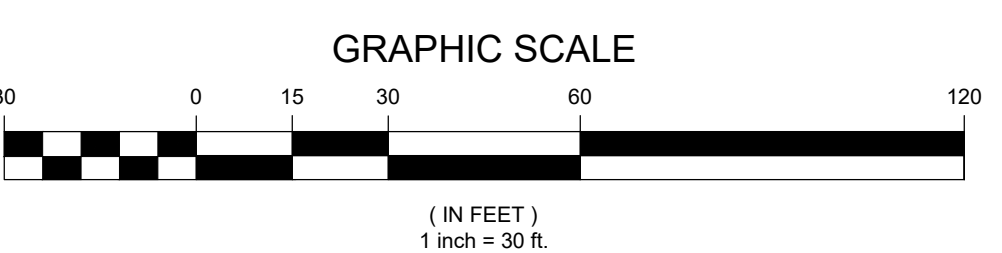
THE STATE OF NEW JERSEY REQUIRES NOTIFICATION BY EXCAVATORS, DESIGNERS, OR ANY PERSON PREPARING TO DISTURB THE EARTH'S SURFACE ANYWHERE IN THE STATE.

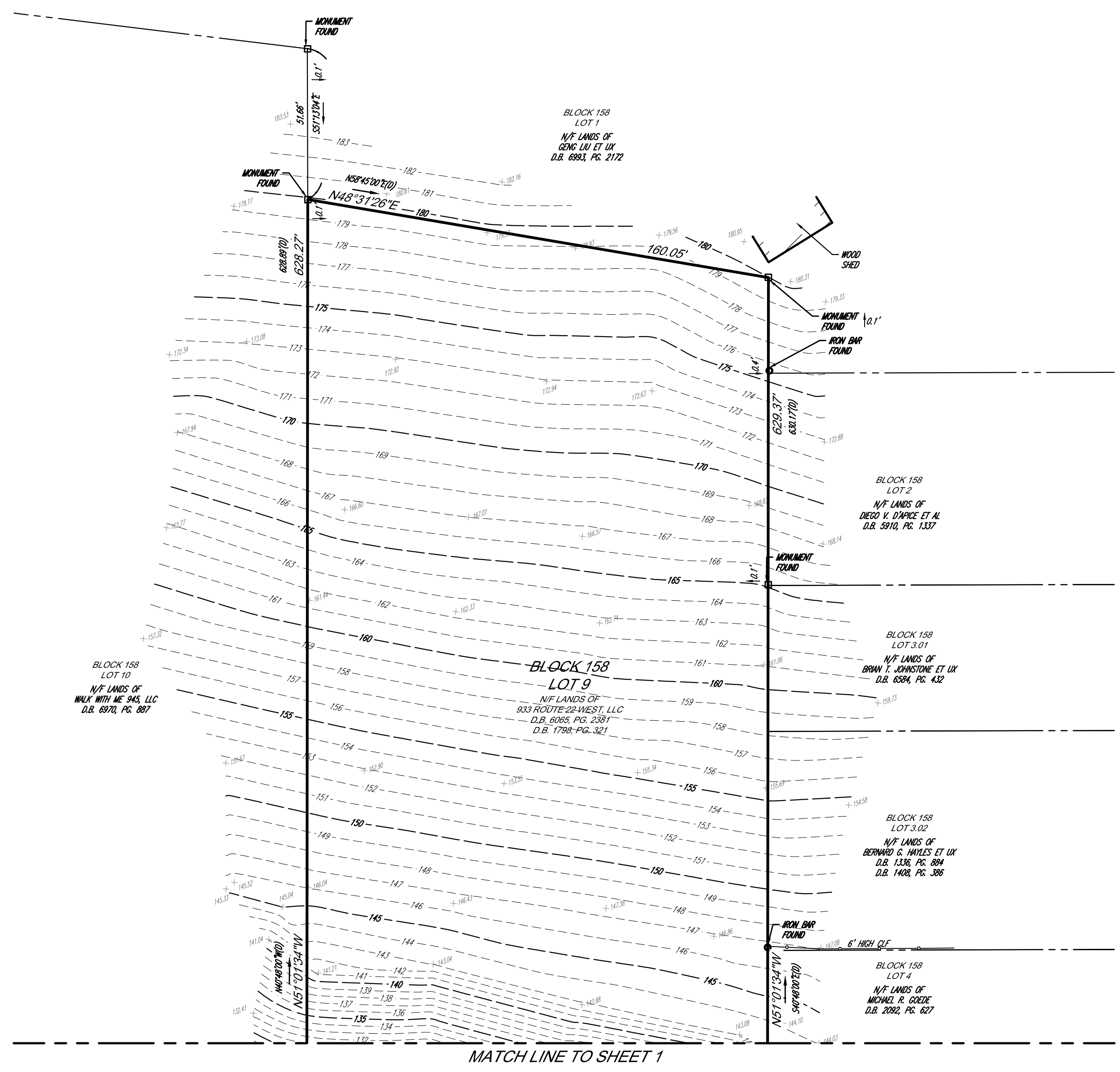
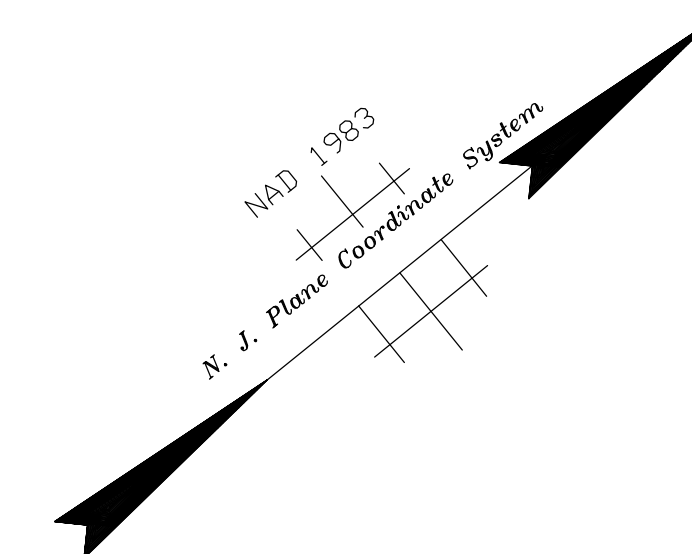
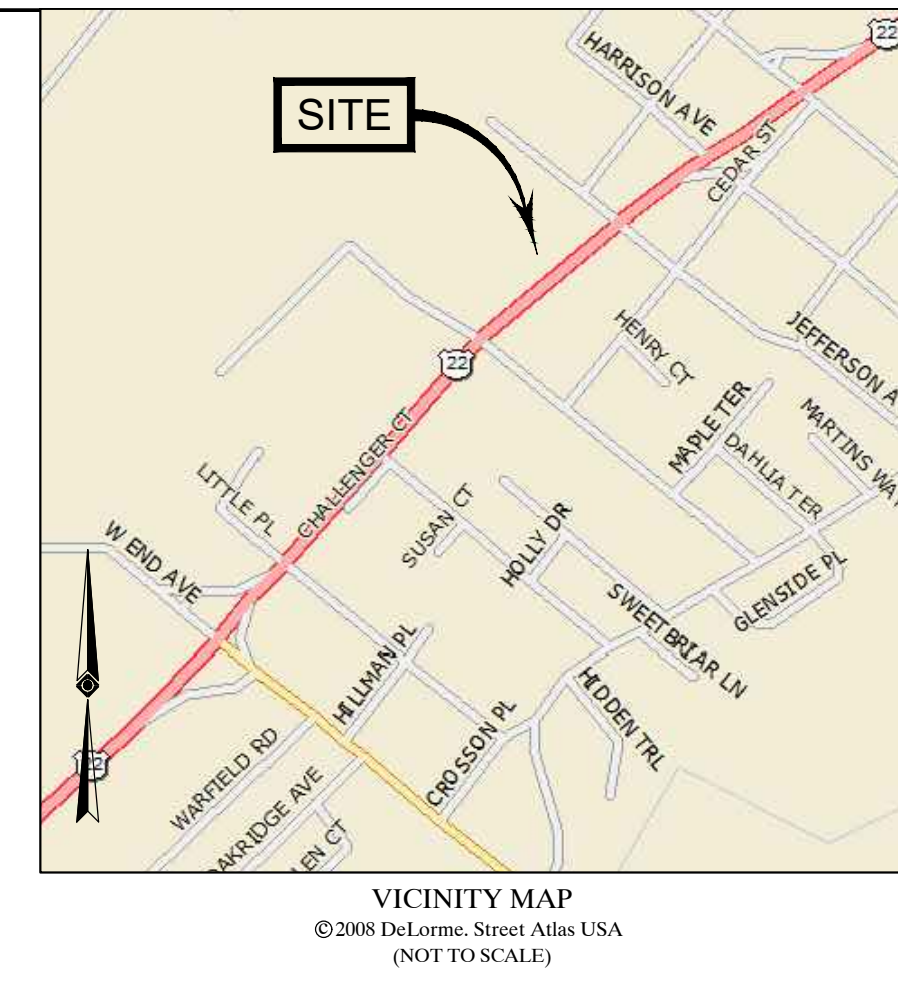
THIS IS TO CERTIFY THAT THIS MAP OR PLAT AND THE SURVEY ON WHICH IT WAS BASED WERE MADE IN ACCORDANCE WITH THE 2016 MINIMUM STANDARD DETAIL REQUIREMENTS FOR ALTA/NSPS LAND TITLE SURVEYS, JOINTLY ESTABLISHED AND ADOPTED BY ALTA AND NSPS, AND INCLUDES ITEMS 2, 3, 4, 5, 8, 9, 11, 13, & 14 OF TABLE A THEREOF. THE FIELD WORK WAS COMPLETED ON 05-10-2021.

NOT A VALID ORIGINAL DOCUMENT UNLESS EMBOSSED WITH RAISED IMPRESSION SEAL.

JAMES D. SENS
 NEW JERSEY PROFESSIONAL LAND SURVEYOR #24G504322600
 NEW JERSEY CERTIFICATE OF AUTHORIZATION #24G50432938600

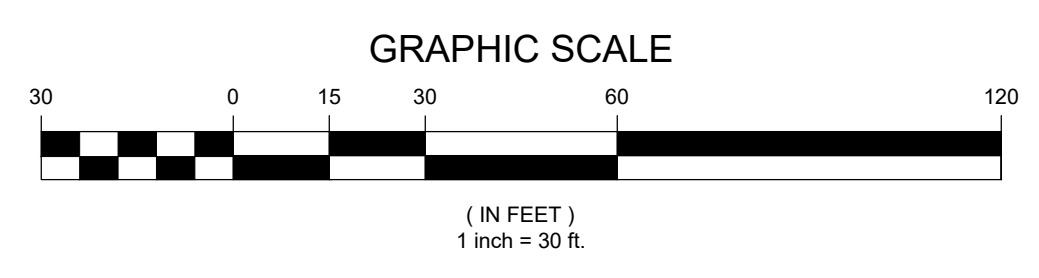
FIELD DATE	05-10-21	ALTA/NSPS LAND TITLE SURVEY	
FIELD BOOK NO.	21-19	BLOCK 158, LOT 9	
FIELD BOOK PG.	22	933 NEW JERSEY STATE HIGHWAY ROUTE 22 WEST	
FIELD CREW	BA/SR	BOROUGH OF NORTH PLAINFIELD, SOMERSET COUNTY	
DRAWN:	AJF	STATE OF NEW JERSEY	
REVIEWED:	KVG		
APPROVED:	JDS	DATE	05-27-2021
SCALE	1"=30'	FILE NO.	01-200394
DWG. NO.	1 OF 2		





LEGEND			
124	EXISTING CONTOUR	—○—	GUY WIRE
+ 123.45	EXISTING SPOT ELEVATION	—○—	STREET LIGHT
+ 10 123.45	EXIST. TOP OF CURB ELEVATION	—○—	TRAFFIC SIGNAL POLE
+ 00 123.45	EXIST. BOTTOM OF CURB ELEVATION	—○—	TRAFFIC SIGNAL
+ 05 123.45	EXIST. DOOR SILL ELEVATION	—○—	PAINTED ARROWS
+ 07 123.45	EXIST. GARAGE FLOOR ELEVATION	—○—	SIGN
RIM=123.00	RIM NAVD 88	—○—	STREET SIGN
INV=123.0	INV. NAVD 88	—○—	BOLLARD/SIGN
—○—	OVERHEAD WIRES	—○—	BOLLARD
—E—	APPROX. LOC. UNDERGROUND ELECTRIC LINE	—○—	METAL GUIDE RAIL
—S—	APPROX. LOC. UNDERGROUND SANITARY LINE	—○—	AREA LIGHT
—D—	APPROX. LOC. UNDERGROUND DRAINAGE LINE	—○—	AREA LAMP
—T—	APPROX. LOC. UNDERGROUND TELEPHONE LINE	—○—	BUILDING LIGHT
—W—	APPROX. LOC. UNDERGROUND WATER LINE	—○—	AREA LAMP
—G—	APPROX. LOC. UNDERGROUND NATURAL GAS LINE	—○—	CATCH BASIN OR INLET
-0+	SUBSURFACE UTILITY QUALITY LEVEL A	—○—	FLOW DIRECTION
-0-	SUBSURFACE UTILITY QUALITY LEVEL B	—○—	STEEL FACED CONC. CURB
-0-	SUBSURFACE UTILITY QUALITY LEVEL C	—○—	CHAIN LINK FENCE
-0-	SUBSURFACE UTILITY QUALITY LEVEL D	—○—	DEPRESSED CURB
—○—	DEPRESSED CURB	—○—	EDGE OF CONC.
—○—	HYDRANT	—○—	EDGE OF PAVEMENT
—○—	WATER VALVE	—○—	GUTTER LINE
—○—	WATER METER	—○—	LANDSCAPED AREA
—○—	AIR CONDITIONING UNIT	—○—	METAL COVER
—○—	GAS VALVE	—○—	TYPICAL
—○—	GAS BOX	—○—	NO VISIBLE PIPE
—○—	GAS METER	—○—	UNOBTAINABLE
—○—	ELECTRIC METER	—○—	FILLED w/DEBRIS
—○—	ELECTRIC BOX	—○—	TOP OF DEBRIS
—○—	UNKNOWN MANHOLE	—○—	REINFORCED CONCRETE PIPE
—○—	SANITARY/SEWER MANHOLE	—○—	CAST IRON PIPE
—○—	DRAINAGE/STORM MANHOLE	—○—	VITRIFIED CLAY PIPE
—○—	ELECTRIC MANHOLE	—○—	STONE BOUND w/DRILL HOLE
—○—	TELEPHONE MANHOLE	—○—	CONC. BOUND w/DRILL HOLE
—○—	WATER MANHOLE	—○—	MONUMENT
—○—	WATER WELL	—○—	DRILL HOLE FOUND
—○—	POST	—○—	ELEVATION
—○—	DETECTABLE WARNING PAD	—○—	OFFSET OF STRUCTURE AT GROUND LEVEL RELATIVE TO PROPERTY LINE
—○—	UTILITY POLE	—○—	DEED DIMENSION
—○—	UTILITY POLE/LIGHT POLE	—○—	UNKNOWN TERMINUS
—○—	PARKING SPACE COUNT	—○—	EVIDENCE FOUND

MATCH LINE TO SHEET 1



THIS IS TO CERTIFY THAT THIS MAP OR PLAT AND THE SURVEY ON WHICH IT WAS BASED WERE MADE IN ACCORDANCE WITH THE 2016 MINIMUM STANDARD DETAIL REQUIREMENTS FOR ALTA/NSPS LAND TITLE SURVEYS, JOINTLY ESTABLISHED AND ADOPTED BY ALTA AND NSPS, AND INCLUDES ITEMS 2, 3, 4, 5, 8, 9, 11, 13, & 14 OF TABLE A THEREOF. THE FIELD WORK WAS COMPLETED ON 05-10-2021.

NOT A VALID ORIGINAL DOCUMENT UNLESS EMBOSSED WITH RAISED IMPRESSION SEAL

JAMES D. SENS
NEW JERSEY PROFESSIONAL LAND SURVEYOR #24G504322600
NEW JERSEY CERTIFICATE OF AUTHORIZATION #24G27938600

FIELD DATE	05-10-2021	ALTA/NSPS LAND TITLE SURVEY
FIELD BOOK NO.	21-19	BLOCK 158, LOT 9
FIELD BOOK PG.	22	933 NEW JERSEY STATE HIGHWAY ROUTE 22 WEST
FIELD CREW	BA/SR	BOROUGH OF NORTH PLAINFIELD, SOMERSET COUNTY
DRAWN	AJF	STATE OF NEW JERSEY
REVIEWED	KVG	
APPROVED	JDS	
DATE	05-27-2021	
SCALE	1"=30'	
FILE NO.	01-200394	
DWG. NO.	2 OF 2	

CONTROL POINT ASSOCIATES, INC. ALL RIGHTS RESERVED. ORIGINAL PROJECT OR COPY. THIS DOCUMENT IS THE PROPERTY OF CONTROL POINT ASSOCIATES, INC. AND IS LOANED TO YOU FOR THE PURPOSES OF THIS PROJECT ONLY. IT IS NOT TO BE REPRODUCED OR TRANSMITTED IN ANY FORM OR BY ANY MEANS, ELECTRONIC OR MECHANICAL, INCLUDING PHOTOCOPYING, RECORDING, OR BY ANY INFORMATION STORAGE AND RETRIEVAL SYSTEM, WITHOUT THE WRITTEN PERMISSION OF CONTROL POINT ASSOCIATES, INC.

CONTROL POINT ASSOCIATES, INC.
30 INDEPENDENCE BOULEVARD, SUITE 100
WARREN, NJ 07059
908.668.0099 • 908.668.9595 FAX
WWW.CPASURVEY.COM

CHALFONTE, PA 21512-0800
NEW JERSEY, NJ 08847-3999
MANHATTAN, NY 10076-5411
LONG BEACH, CA 90801-3900
SOUTH PLAINFIELD, NJ 08068-3900
ROSELAND, NJ 08068-3900
NEW YORK, NY 10121-2000
NEW YORK, NY 10121-2000