

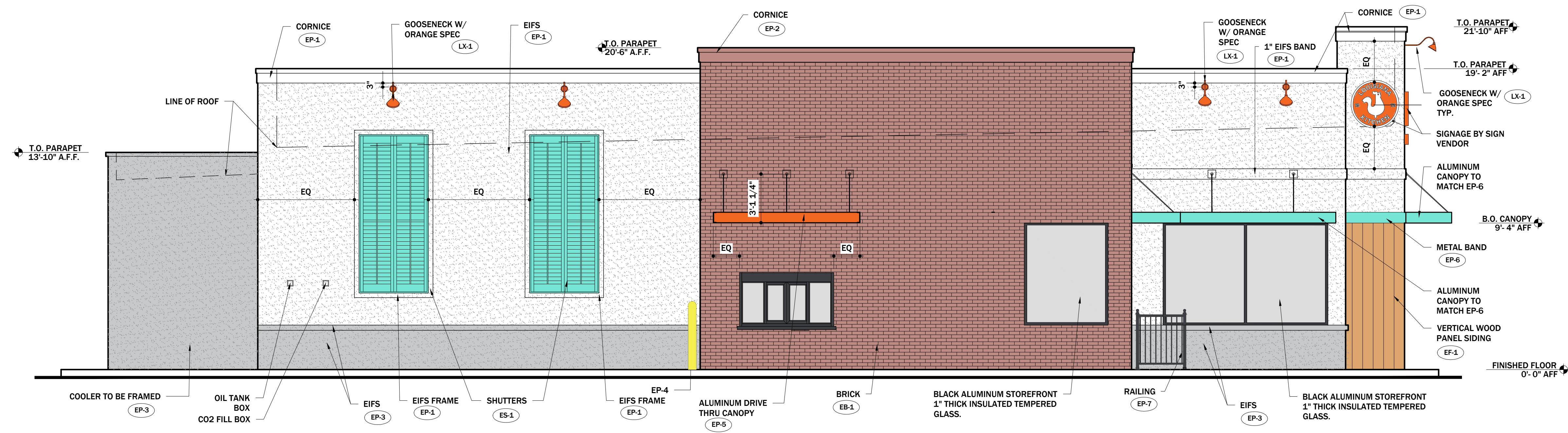
ZELTA
DESIGN

P: 973-933-6636 E: hello@zeltadesign.com

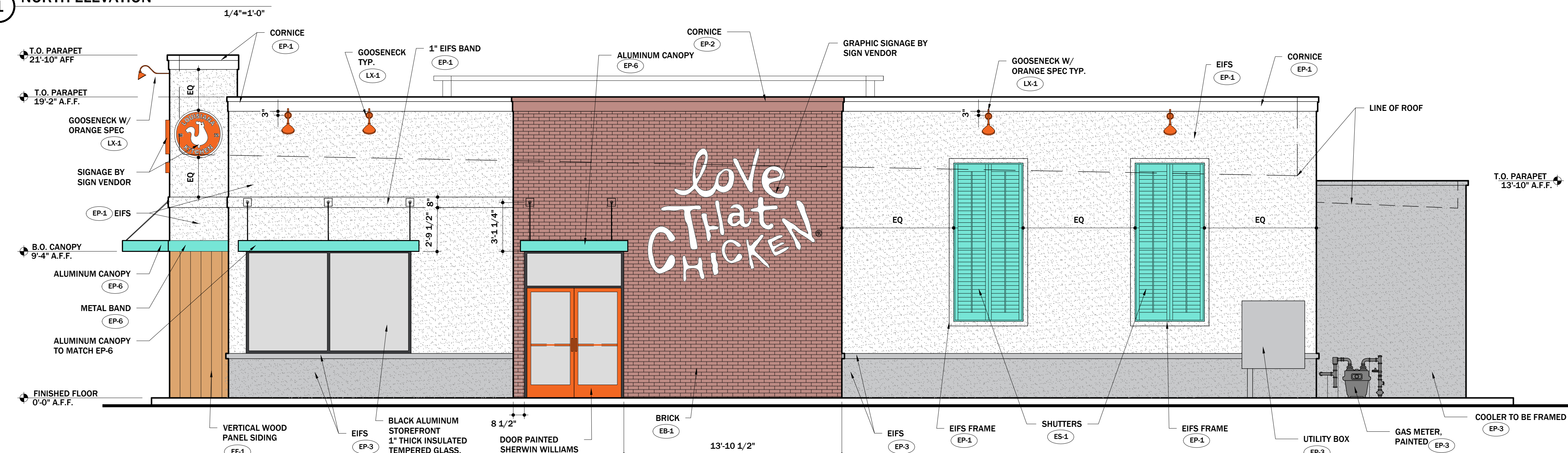
45 Sussex Avenue
Newark, New Jersey 07103

Revisions

No.	Description	Date



1 NORTH ELEVATION



2 SOUTH ELEVATION

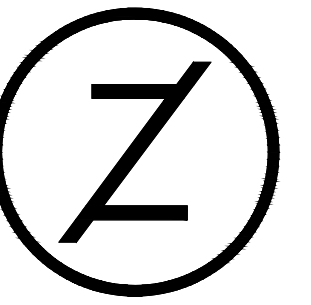


Popeyes Louisiana Kitchen

933 Route 22 West
North Plainfield, NJ 07060

Exterior Elevations

Project No. Z017-20
Date: 08/13/2021
Drawn By: DS
Scale: As Noted
NJ License No. 21A02169300



Z E L T A
DESIGN

P: 973-933-6636 E: hello@zeltadesign.com

45 Sussex Avenue
Newark, New Jersey 07103

Revisions

No.	Description	Date



Popeyes Louisiana Kitchen

933 Route 22 West
North Plainfield, NJ 07060

Exterior Finish Schedule

Project No. Z017-20

Date: 08/13/2021

Drawn By: DS

Scale: As Noted

NJ License No.
21A102169300

A4

2021 POPEYE'S FINISH SCHEDULE							
EXTERIOR MATERIALS & FINISH SCHEDULE ** TO BE USED WITH FS - LEGACY (1846)							
CODE	MATERIAL	LOCATION	SOURCE	PRODUCT	COLOR	DIMENSION	ADDITIONAL INFORMATION
WALL FINISHES AND PAINT							
EB-1	FACE BRICK	ACCENT TOWER BRICK	NICHIHA FIBER CEMENT	VINTAGE BRICK	ALEXANDRIA BUFF	7 3/8" X 2 1/2" X 3/4"	CONTACT: MATT STEPHENSON M: 770.789.8228 POPEYES@NICHIHA.COM
			ALTERNATE - CREATIVE MATERIALS CORPORATION	THIN BRIK	FLAG STAFF	8-1/8" x2-1/16" x 5/8"	CONTACT: POPEYESTILES@CREATIVEMATERIALSCORP.COM : 1.800.207.2967 EXT 7797
EF-1	EXTERIOR WOOD SIDING	FRONT FACADE EXTERIOR WALL	NICHIHA FIBER CEMENT	VINTAGE WOOD AWP3030	CEDAR	17-7/8"H x 119-5/16"L	CONTACT: MATT STEPHENSON M: 770.789.8228 POPEYES@NICHIHA.COM
EP-1	EXTERIOR PAINT	MAIN WALL SURFACE ABOVE WAINSCOT ACCENT TRIM	BENJAMIN MOORE	ULTRA SPEC EXT LOW LUSTRE (N455)	WHITE OC-125 MOONLIGHT WHITE		CONTACT: RODGER LIPPMAN C:848.702.0239 RODGER.LIPPMAN@BENJAMINMOORE.COM/ CONTACT:
			SHERWIN WILLIAMS	A-100 EXTERIOR LATEX SATIN/	SW 7551 GREEK VILLA		GLENN REMLER C:954.547.1217 GLEM.J.REMLER@SHERWIN.COM
EP-2	EXTERIOR PAINT	BRICK TOWER METAL CAPING	BENJAMIN MOORE	ULTRA SPEC EXT LOW LUSTRE (N455)	ROOT BEER CANDY 2105-20		CONTACT: RODGER LIPPMAN C:848.702.0239 RODGER.LIPPMAN@BENJAMINMOORE.COM/ CONTACT:
			SHERWIN WILLIAMS	A-100 EXTERIOR LATEX SATIN	SW 6062 RUGGED BROWN		GLENN REMLER C:954.547.1217 GLEM.J.REMLER@SHERWIN.COM
EP-3	EXTERIOR PAINT	EXTERIOR WAINSCOT, SLL PAINT, AND DUMSPYER WALLS	BENJAMIN MOORE	ULTRA SPEC EXT LOW LUSTRE (N455)	GRAY HC-170 STONINGTONGREY,		CONTACT: RODGER LIPPMAN C:848.702.0239 RODGER.LIPPMAN@BENJAMINMOORE.COM/ CONTACT:
			SHERWIN WILLIAMS,	A-100 EXTERIOR LATEX SATIN,	SW 7657 TINSMITH		GLENN REMLER C:954.547.1217 GLEM.J.REMLER@SHERWIN.COM
EP-4	EXTERIOR PAINT	BOLLARDS, PYLON POLE AND DIRECTIONAL SIGN POLES	BENJAMIN MOORE	COROTECH HIGH SOLIDS RAPID DRY ENAMEL	SAFELY YELLOW		CONTACT: RODGER LIPPMAN C:848.702.0239 RODGER.LIPPMAN@BENJAMINMOORE.COM/ CONTACT:
			SHERWIN WILLIAMS,	INDUSTRIAL ENAMEL HS,			GLENN REMLER C:954.547.1217 GLEM.J.REMLER@SHERWIN.COM
EP-5	METAL PAINT	DRIVE THRU WINDOW CANOPY	PROVIDED BY MANUFACTURER	ORANGE PANTONE #3564 C. PROVIDED BY MANUFACTURER			PROVIDED BY MANUFACTURER
EP-6	METAL PAINT	BUILDING CANOPIES	PROVIDED BY MANUFACTURER	TEAL. PANTONE #326 C. PROVIDED BY MANUFACTURER			PROVIDED BY MANUFACTURER
EP-7	EXTERIOR PAINT	DUMPSTER GATES	. BENJAMIN MOORE	COROTECH HIGH SOLIDS RAPID DRY ENAMEL	FACTORY FINISH BLACK		CONTACT: RODGER LIPPMAN C:848.702.0239 RODGER.LIPPMAN@BENJAMINMOORE.COM/ CONTACT:
			SHERWIN WILLIAMS	INDUSTRIAL ENAMEL HS,	SW 6991 BLACK MAGIC		GLENN REMLER C:954.547.1217 GLEM.J.REMLER@SHERWIN.COM
EP-8	EXTERIOR PAINT	ALL EXTERIOR WALLS	. BENJAMIN MOORE	ALPHATIC ACRYLIC URETHANE-GLASS,	ANTI-GRAFFITI COAT V500-00 CLEAR		CONTACT: RODGER LIPPMAN C:848.702.0239 RODGER.LIPPMAN@BENJAMINMOORE.COM/ CONTACT:
			SHERWIN WILLIAMS	2K WATERBASED URETHANE - GLOSS	ANTI-GRAFFETI COATING B65-190, B65V190		GLENN REMLER C:954.547.1217 GLEM.J.REMLER@SHERWIN.COM
DP-1	DOOR	EXTERIOR DOORS MAIN ENTRANCE AND SIDE ENTRANCE	PROVIDED BY MANUFACTURER	TO BE PURCHASED FROM MANUFACTURER IN ORANGE FINISH. ORANGE.PANTONE #3564 C.PROVIDED BY MANUFACTURER			PROVIDED BY MANUFACTURER
ES-1	SHUTTERS	EXTERIOR WALLS	PROVIDED BY MANUFACTURER	TO BE PURCHASED FROM MANUFACTURER IN TEAL FINISH. TEAL. PANTONE #326 C.			PROVIDED BY MANUFACTURER