

November 18, 2021

Mr. Abe Auerbach
Regency Development Properties, LLC
315 Monmouth Avenue, Suite 208
Lakewood, New Jersey 08701

**Re: Yeshiva Tiferes Boruch, North Plainfield, NJ
New Academic Building (Block 134, Lot 1)
Tree Inventory + Evaluation Results**

Dear Mr. Auerbach:

Paul Cowie and Associates (PC+A) inventoried and evaluated existing trees within the above-referenced property on November 16, 2021.

The data collected and the recommendations made for each inventoried tree are presented in the attached table. The following is an explanation of the data parameters included.

Trees Inventoried

This tree inventory and evaluation was limited to trees growing on the property and measuring 4-inches in diameter or larger, as per Borough Code requirements. Trees not possessing at least one stem 4-inches diameter or larger at the time of the inventory were not included. Shrubs, vines, groundcovers, and other vegetation were also excluded.

Adjacent street trees, which may or may not be necessary for Borough permitting, were included and are indicated as such in the 'Observations' column of the data table.

A total of 88 existing trees were inventoried and evaluated.

Numeric Identification + Mapping

Each surveyed tree was assigned a unique identification number ranging from 1 through 88 and tagged with a hand-embossed aluminum tag labelled with the corresponding ID number.

The number assigned to each tree is indicated on the attached survey markup and corresponds to the 'ID#' column in the attached data table. The approximate locations of several trees that were not shown on the survey were added by PC+A with a '*' symbol. Please note that the location of these trees was not precisely surveyed and should be considered roughly approximate.

16 trees shown on the survey were not found (presumably removed). They are indicated on the attached survey with an 'X'.

Site Description

The site in which each tree was rooted was briefly described, based on field observations. Site dimensions were also recorded where they are limited and likely to be restrictive to long-term tree health and/or structure.

Tree Species, Size + Age Classification

Each tree is identified in the data table by both its regionally accepted common name and its botanical name.

The 'Lower Hudson Prism Tier 1-4 Invasive Species' column indicates invasive species status based on whether the species is currently listed by the Lower Hudson Valley Partnership for Regional Invasive Species Management.

The diameter of each inventoried tree was measured with a diameter tape to the nearest one-tenth inch at a point 4.5-inches above ground level (DBH), or as indicated.

In the case of multiple-stem trees, the diameter of the stems was measured and recorded, and the root sum squared of the stems ($RSS = \sqrt{D1^2 + D2^2 + D3^2 \dots}$) was calculated to provide a single-stem equivalence for the purpose of determining critical root zone radii.

The age class of each tree was recorded based on apparent age relative to the normal life expectancy of the species. Age was classified as 'Young' if the tree had exhausted up to 20% of the species' typical life expectancy, 'Mature' if it had exhausted 20% to 80% of the species' life expectancy, or 'Over-Mature' if it had exhausted more than 80% of the species' life expectancy.

Tree Protection Zone (TPZ) + Structural Root Zone (SRZ)

Tree protection zone radius is the ground area around a tree which, if fully protected from soil compaction, grade changes, excavation, and other soil and root-damaging impacts, will ensure that tree health and structural integrity will not be compromised by construction activity. This information is provided to assist in evaluating the potential impact of locating grading, pavement, underground utilities, and other proposed improvements in a manner that minimizes impacts to existing trees to be retained.

Structural root zone radius (SRZ) is the ground area around a tree which, if violated by construction activity, will almost certainly result in severe damage to tree health and structural integrity, and may result in uprooting.

Tree Condition

The condition of each inventoried tree was systematically evaluated and rated with consideration given to both the health and vigor and the structural integrity of the root system, primary stems, scaffold branching, small branches and twigs, and foliage.

A rating of 'Good', 'Fair', or 'Poor' was assigned separately to the health and vigor as well as to the structure and form of each inventoried tree. An 'Overall Condition' rating was then assigned, as follows:

- *Good*: The tree had no more than one or two minor health disorders and/or structural defects and was growing with normal vigor;
- *Fair*: The tree had 2 – 4 minor, or one major, health disorders and/or structural defects, and/or was growing with below-normal vigor or other limitations.

- *Poor*: The tree had several minor, or two or more major, health disorders and/or structural defects, and/or was declining in vigor.
- *Dead*: 75% or more of the crown was dead and any remaining live portions were deteriorating in health.

Please note that inspection of the inventoried trees was limited to visual observations from the ground and did not include climbing, aerial inspections, subsurface exploration, wood strength testing, or other advanced diagnostic techniques, which may be necessary to fully identify and evaluate the severity of certain health disorders and structural defects. Therefore, certain health disorders and/or structural defects may have not been noted or their extent may not have been fully determined.

Observations

The 'Observations' column contains various comments regarding the nature and severity of defects and disorders noted, particularly where they resulted in reduced condition ratings and/or recommendations for tree removal.

Recommendations

Where appropriate, recommendations for pruning to remove potentially hazardous dead, dying, damaged, and/or diseased limbs, pruning to improve branch architecture, cabling to reduce the risk of failure at certain branch defects, or tree removal were made based on conditions observed at the time each tree was evaluated.

Terminology for various pruning types (e.g. 'Clean crown', 'Reduce crown', 'Structural prune', etc.) correspond to ANSI A300 *American National Standard for Tree Care Operations*.

Definitive recommendations for removing trees were made only where there was clear present need due to a tree's current degraded health, structural integrity, and/or potential hazard risk, often in combination with hardscape conflicts.

In several additional cases where removal is not currently required due to degraded tree condition, but multiple undesirable factors exist (aggressively invasive species, volunteer growth that does not appear to be part of the intended landscape design, existing or expected hardscape conflicts, etc.), recommendations were made for strongly considering removal as part of efforts to restore the landscape.

There likely will be additional tree removals that become necessary to construct the new academic building.

Summary of General Findings + Recommendations

1. 25 (28%) of the 88 trees inventoried are generally considered to be exotic invasive species. Except for Callery pear and Norway maple, all are almost universally considered to be highly undesirable. It is PC+A's opinion that these trees, with the exception of the Callery pear (#16) and larger diameter Norway maples, were not planted, but invaded the site well after the landscape was designed and built due to insufficient maintenance.
2. A total of 12 inventoried trees were recommended for removal because they were dead or in irreparably degraded health or structural condition with limited remaining service life expectancy. In each case, it is PC+A's opinion that removal is required and should be completed whether or not removal is necessary for completing proposed construction work.
3. It is PC+A's opinion that 6 additional trees should be strongly considered for removal because they are aggressively invasive species and/or appear to have invaded the site versus being part of the intended landscape design and are in moderate to severe conflict with structures.

Please don't hesitate to contact me if you have any questions or require any additional information.

Sincerely,

PAUL COWIE AND ASSOCIATES

A handwritten signature in blue ink that reads "Paul F. Cowie". The signature is written in a cursive style with a large, looping initial "P".

Paul F. Cowie
President

PFC:pc
Encl.

BLOCK 131

LOT 31.02

LOT 31

LOT 30

LOT 29

LOT 28

ROCKVIEW (60' R.O.W.) AVENUE

LOT 3

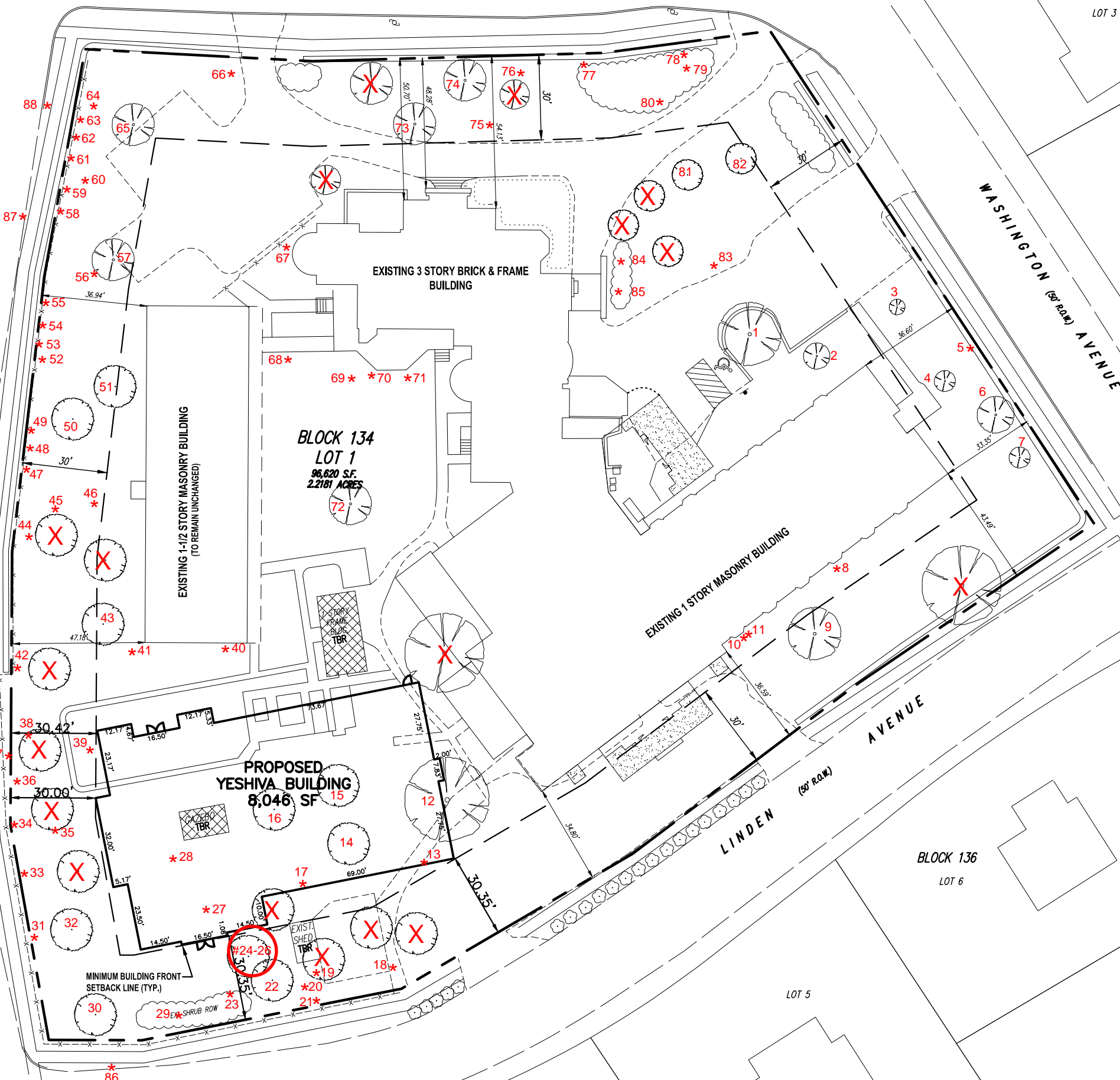
BLOCK 135

LOT 2

WASHINGTON (60' R.O.W.) AVENUE

SYCAMORE (60' R.O.W.) AVENUE

21.02



BLOCK 134
LOT 1
96,620 SF
2.2181 ACRES

PROPOSED
YESHIVA BUILDING
8,046 SF

EXISTING 1-1/2 STORY MASONRY BUILDING
(TO REMAIN UNCHANGED)

EXISTING 3 STORY BRICK & FRAME BUILDING

EXISTING 1 STORY MASONRY BUILDING

MINIMUM BUILDING FRONT
SETBACK LINE (TYP.)

SHRUB ROW

LOT 1

LOT 2

LOT 3

LOT 5

LOT 3

LOT 4

LOT 5

BLOCK 136
LOT 6

Tree Inventory and Evaluation Data

ID #	SITE TYPE (SIZE)	SPECIES	LOWER HUDSON PRISM TIER 1-4 INVASIVE SPECIES	DIAMETER (in) (dead stems)	SINGLE-STEM EQUIVALENT (RSS)	AGE CLASS	TPZ (ft radius)	SRZ (ft radius)	HEALTH + VIGOR	STRUCTURE + FORM	OVERALL CONDITION	OBSERVATIONS	RECOMMENDATIONS
1	Lawn (20')	White ash <i>Fraxinus americana</i>	---	43.5	43.5	Over-mature	54.4	18.1	Poor	Fair	Poor	Moderately severe emerald ash borer in upper trunk. Moderately severe dieback in small branches and twigs.	Consider removal due to emerald ash borer and resulting limited remaining life expectancy. If tree is to remain, clean crown (high priority).
2	Lawn	Golden rain tree <i>Koelreuteria paniculata</i>	---	16.5	16.5	Mature	20.6	6.9	Fair	Fair	Fair	Severe decay in lower trunk. Multiple moderate splits in scaffold limbs. Diameter measured at 4'.	Remove tree (medium priority).
3	Lawn	Golden rain tree <i>Koelreuteria paniculata</i>	---	7.4, 7.4	10.5	Young	10.5	4.4	Fair	Fair	Fair	1 moderately weak crotch in lower trunk. 2 moderately severe splits in scaffold limbs.	Clean crown (medium priority).
4	Lawn	Kousa dogwood <i>Cornus kousa</i>	---	10.4, 10.6, 6.0, 17.4	23.6	Over-mature	35.5	9.9	Fair	Poor	Poor	Severe decay in lower trunk. Moderately severe decay in 1 main trunk. Moderate dieback in small branches and twigs. 17" stem diameter measured at 3.5'.	Remove tree (high priority).
5	Landscape bed	White ash <i>Fraxinus americana</i>	---	5.9, 6.6	8.9	Young	6.6	3.7	Good	Poor	Fair	Severe utility disfigurement in upper trunks. Severe vine competition in main trunk.	Consider removal due to species susceptibility to emerald ash borer; apparent volunteer in landscape. If tree is to remain, structural prune, raise crown, and clear vines (low priority).
6	Lawn	Eastern hemlock <i>Tsuga canadensis</i>	---	22.4, 20.1, 25.5	39.4	Mature	49.3	16.4	Poor	Fair	Poor	1 moderately weak crotch in lower trunk. Severe dieback in 1 upper trunk. Moderately severe dieback in scaffold limbs.	Clean crown (high priority).
7	Landscape bed	Japanese maple <i>Acer palmatum</i>	---	6.7, 7.4	10.0	Mature	12.5	4.2	Good	Good	Good	Diameters measured at 3.5'.	Raise crown (low priority).
8	Landscape bed	Black walnut <i>Juglans nigra</i>	---	4.3, 5.2	6.7	Young	6.7	2.8	Good	Good	Good	---	Consider removal due to large mature size, future infrastructure conflicts; apparent volunteer in landscape. If tree is to remain, structural prune and raise crown (low priority).
9	Landscape bed	Holly species <i>Ilex spp.</i>	---	3.2, 3.3, 4.6, 4.5, 4.7, 6.1, 2.5, 2.5, 6.3, 4.5, 6.0, 2.0, 4.0	15.8	Mature	11.9	6.6	Good	Fair	Good	---	---
10	Landscape bed	Golden rain tree <i>Koelreuteria paniculata</i>	---	6.0, 5.9, 7.2	11.1	Mature	13.8	4.6	Good	Good	Good	Growing against building.	Consider removal due to large mature size, future infrastructure conflicts; apparent volunteer in landscape. If tree is to remain, structural prune and raise crown (low priority).
11	Landscape bed	Black walnut <i>Juglans nigra</i>	---	5.0	5.0	Young	5.0	2.1	Good	Fair	Fair	Roots severely restricted by tree #10.	Consider removal due to large mature size, future infrastructure conflicts; apparent volunteer in landscape. If tree is to remain, structural prune and raise crown (low priority).
12	Landscape bed	American sycamore <i>Platanus occidentalis</i>	---	63.5	63.5	Over-mature	79.4	26.5	Good	Fair	Fair	Moderately severe decay in 1 upper trunk. 3 severe splits in scaffold limbs. Moderate decay in root collar.	Inspect upper trunk to evaluate extent of decay and determine need for removal (high priority).
13	Landscape bed	Black cherry <i>Prunus serotina</i>	---	7.2	7.2	Young	5.4	3.0	Fair	Fair	Fair	Moderately suppressed by tree #12.	Structural prune and raise crown (low priority).
14	Landscape bed	Norway maple <i>Acer platanoides</i>	Tier 4 - Widespread	5.4	5.4	Young	4.1	2.3	Good	Fair	Good	---	Structural prune (low priority).
15	Landscape bed	Leyland cypress <i>x Cuprocyparis leylandii</i>	---	19.0	19.0	Mature	23.8	7.9	Good	Good	Good	Memorial tree.	Clean and raise crown (medium priority).

ID #	SITE TYPE (SIZE)	SPECIES	LOWER HUDSON PRISM TIER 1-4 INVASIVE SPECIES	DIAMETER (in) (dead stems)	SINGLE-STEM EQUIVALENT (RSS)	AGE CLASS	TPZ (ft radius)	SRZ (ft radius)	HEALTH + VIGOR	STRUCTURE + FORM	OVERALL CONDITION	OBSERVATIONS	RECOMMENDATIONS
16	Landscape bed	Callery pear <i>Pyrus calleryana</i>	Tier 3 - Established	17.0	17.0	Mature	17.0	7.1	Fair	Poor	Fair	1 moderately severe weak crotch in main trunk. 2 severe weak crotches in main trunk. Diameter measured at 3.5'.	Clean crown (medium priority).
17	Landscape bed	American elm <i>Ulmus americana</i>	---	7.8	7.8	Young	3.9	3.3	Fair	Fair	Fair	Moderate vine competition in main trunk.	Clear vines (low priority).
18	Landscape bed	White mulberry <i>Morus alba</i>	Tier 4 - Widespread	19.4, 15.7	25.0	Mature	5.1	10.4	Fair	Fair	Fair	1 moderately severe weak crotch in lower trunk. Severe vine competition in main trunk. Moderately severely suppressed. Severe lean in 1 upper trunk.	Clean crown and clear vines (high priority).
19	Landscape bed	Norway maple <i>Acer platanoides</i>	Tier 4 - Widespread	4.7	4.7	Young	43.5	2.0	Fair	Fair	Fair	Moderately severely suppressed.	Structural prune and raise crown (low priority).
20	Landscape bed	American elm <i>Ulmus americana</i>	---	4.2	4.2	Young	18.0	1.8	Fair	Good	Fair	Moderately suppressed.	Structural prune (low priority).
21	Landscape bed	Norway maple <i>Acer platanoides</i>	Tier 4 - Widespread	4.2	4.2	Young	5.3	1.8	Fair	Fair	Fair	Moderately suppressed.	Structural prune and raise crown (low priority).
22	Landscape bed	Pin oak <i>Quercus palustris</i>	---	34.8	34.8	Over-mature	3.7	14.5	Good	Good	Good	Moderate vine competition in scaffold limbs.	Clean crown and clear vines (high priority).
23	Landscape bed	White ash <i>Fraxinus americana</i>	---	24.0	24.0	Mature	8.9	10.0	Poor	Fair	Poor	Moderate emerald ash borer in upper trunks. Moderately severe dieback in small branches and twigs.	Remove tree due to emerald ash borer and limited remaining life expectancy (high priority).
24	Landscape bed	American elm <i>Ulmus americana</i>	---	7.0	7.0	Young	10.7	2.9	Good	Fair	Fair	Moderate lean in upper trunk.	Structural prune (low priority).
25	Landscape bed	White mulberry <i>Morus alba</i>	Tier 4 - Widespread	4.9	4.9	Young	3.8	2.0	Good	Fair	Fair	Moderate lean in main trunk.	Structural prune (low priority).
26	Landscape bed	American elm <i>Ulmus americana</i>	---	6.8	6.8	Young	9.6	2.8	Good	Fair	Good	---	Structural prune (low priority).
27	Landscape bed	Kousa dogwood <i>Cornus kousa</i>	---	4.0, 2.6, 3.8, 3.0, 2.2, 3.8, 2.5, 2.1, 1.6	8.9	Mature	4.7	3.7	Good	Fair	Good	Diameters measured at 3'.	Structural prune (low priority).
28	Lawn	American yellowwood <i>Cladrastis kentukea</i>	---	14.2	14.2	Mature	31.2	5.9	Fair	Fair	Fair	Severe dieback in 2 upper trunks.	Clean crown (high priority).
29	Landscape bed	Black cherry <i>Prunus serotina</i>	---	5.0	5.0	Young	27.8	2.1	Good	Good	Good	---	---
30	Landscape bed	Nellie Stevens holly <i>Ilex</i> x 'Nellie R. Stevens'	---	12.8	12.8	Mature	11.4	5.3	Good	Fair	Good	Diameter measured at 3'.	Raise crown over road (low priority).
31	Landscape bed	Pin oak <i>Quercus palustris</i>	---	27.8	27.8	Mature	3.2	11.6	Good	Fair	Good	Moderately severe vine competition in main trunk.	Clear vines (low priority).
32	Lawn	Southern magnolia <i>Magnolia grandiflora</i>	---	13.9, 6.2	15.2	Mature	3.2	6.3	Good	Fair	Good	Moderately severe vine competition in small branches and twigs. Wasp nest. Moderately severe split in 1 scaffold limb. 1 severe weak crotch in main trunk.	Structural prune and clear vines (low priority).
33	Landscape bed	Pin oak <i>Quercus palustris</i>	---	19.5	19.5	---	---	---	---	---	Dead	Only 15' of trunk remaining.	Remove tree (high priority).
34	Landscape bed	Pin oak <i>Quercus palustris</i>	---	21.4	21.4	Mature	21.4	8.9	Fair	Fair	Fair	Moderate vine competition in scaffold limbs.	Clean crown and clear vines (high priority).
35	Landscape bed	Chinese juniper <i>Juniperus chinensis</i>	---	7.6	7.6	Young	7.6	3.2	Fair	Good	Fair	Moderately severe vine competition in small branches and twigs. Moderately suppressed.	Clear vines (low priority).
36	Landscape bed	Southern catalpa <i>Catalpa bignonioides</i>	---	12.6	12.6	Mature	9.5	5.3	Fair	Fair	Fair	Moderate vine competition in scaffold limbs. Moderately suppressed.	Clean crown and clear vines (medium priority).
37	Landscape bed	Black cherry <i>Prunus serotina</i>	---	8.2	8.2	Mature	8.2	3.4	Good	Poor	Fair	Upper trunks previously topped.	Structural prune and raise crown (low priority).

ID #	SITE TYPE (SIZE)	SPECIES	LOWER HUDSON PRISM TIER 1-4 INVASIVE SPECIES	DIAMETER (in) (dead stems)	SINGLE-STEM EQUIVALENT (RSS)	AGE CLASS	TPZ (ft radius)	SRZ (ft radius)	HEALTH + VIGOR	STRUCTURE + FORM	OVERALL CONDITION	OBSERVATIONS	RECOMMENDATIONS
38	Landscape bed	English yew <i>Taxus baccata</i>	---	7.2	7.2	Young	7.2	3.0	Good	Good	Good	Moderately severe vine competition in small branches and twigs.	Clear vines (low priority).
39	Landscape bed	Willow oak <i>Quercus phellos</i>	---	35.8	35.8	Mature	35.8	14.9	Fair	Fair	Fair	Moderately severe weak crotch in main trunk.	Clean crown (high priority).
40	Landscape bed	Princess tree <i>Paulownia tomentosa</i>	Tier 3 - Established	10.5	10.5	Young	5.3	4.4	Good	Fair	Good	---	Structural prune and raise crown (low priority).
41	Landscape bed	Colorado blue spruce <i>Picea pungens</i> 'Glauca'	---	7.9	7.9	Young	5.9	3.3	Poor	Fair	Poor	Moderately severe vine competition in small branches and twigs. Moderate dieback in twigs.	Clear vines (low priority).
42	Landscape bed	English yew <i>Taxus baccata</i>	---	8.7	8.7	Young	8.7	3.6	Good	Good	Good	Moderate sapsucker injury in main trunk. Moderate vine competition in small branches and twigs.	Clear vines (low priority).
43	Landscape bed	Black cherry <i>Prunus serotina</i>	---	16.3, 13.2, 12.5, 19.8	31.4	Mature	31.4	13.1	Fair	Fair	Fair	3 moderately severe weak crotches in lower trunk. Moderately severe vine competition in main trunks.	Clean crown and clear vines (high priority).
44	Landscape bed	Norway maple <i>Acer platanoides</i>	Tier 4 - Widespread	27.7	27.7	Mature	27.7	11.5	Fair	Fair	Fair	---	Clean and raise crown (high priority).
45	Landscape bed	Chinese juniper <i>Juniperus chinensis</i>	---	4.4	4.4	Young	4.4	1.8	Poor	Poor	Poor	Very severe dieback in small branches and twigs.	Remove tree (low priority).
46	Landscape bed	Blue atlas cedar <i>Cedrus atlantica</i> 'Glauca'	---	11.2	11.2	Mature	14.0	4.7	Fair	Fair	Fair	Moderate vine competition in scaffold limbs.	Raise crown and clear vines (low priority).
47	Landscape bed	Crabapple <i>Malus spp.</i>	---	15.0	15.0	Mature	15.0	6.3	Fair	Fair	Fair	---	Clean crown (medium priority).
48	Landscape bed	American arborvitae <i>Thuja occidentalis</i>	---	4.7	4.7	Young	4.7	2.0	Fair	Fair	Fair	---	Raise crown (low priority).
49	Landscape bed	American arborvitae <i>Thuja occidentalis</i>	---	4.1	4.1	Young	4.1	1.7	Fair	Fair	Fair	---	Raise crown (low priority).
50	Landscape bed	Norway maple <i>Acer platanoides</i>	Tier 4 - Widespread	16.4	16.4	Mature	16.4	6.8	Fair	Fair	Fair	---	Clean and raise crown (medium priority).
51	Landscape bed	Norway maple <i>Acer platanoides</i>	Tier 4 - Widespread	18.2	18.2	Mature	18.2	7.6	Fair	Good	Fair	---	Clean and raise crown (medium priority).
52	Landscape bed	Flowering dogwood <i>Cornus florida</i>	---	6.1	6.1	Mature	6.1	2.5	Poor	Poor	Poor	Moderately severe dieback in scaffold limbs. Moderately severe decay in main trunk.	Remove tree (low priority).
53	Landscape bed	Flowering dogwood <i>Cornus florida</i>	---	5.9, 2.7	6.5	Young	4.9	2.7	Poor	Poor	Poor	Severe dieback in scaffold limbs.	Remove tree (medium priority).
54	Landscape bed	Chinese juniper <i>Juniperus chinensis</i>	---	4.0	4.0	Young	4.0	1.7	Fair	Good	Fair	Moderate vine competition in scaffold limbs.	Clear vines (low priority).
55	Landscape bed	Pin oak <i>Quercus palustris</i>	---	13.3	13.3	Mature	13.3	5.5	Fair	Fair	Fair	Moderately severely suppressed.	Clean and raise crown (medium priority).
56	Landscape bed	Norway maple <i>Acer platanoides</i>	Tier 4 - Widespread	16.4	16.4	Mature	16.4	6.8	Fair	Good	Good	---	Clean and raise crown (medium priority).
57	Landscape bed	Pin oak <i>Quercus palustris</i>	---	34.8	34.8	Mature	34.8	14.5	Good	Good	Good	---	Clean and raise crown (high priority).
58	Landscape bed	Sugar maple <i>Acer saccharum</i>	---	11.8	11.8	Mature	14.8	4.9	Fair	Fair	Fair	---	Clean and raise crown (medium priority).
59	Landscape bed	Sugar maple <i>Acer saccharum</i>	---	9.0	9.0	Mature	11.3	3.8	Fair	Fair	Fair	---	Clean crown (medium priority).
60	Landscape bed	Sweet cherry <i>Prunus avium</i>	Tier 4 - Widespread	8.5	8.5	---	---	---	---	---	Dead	Only 25' of trunk remaining.	Remove tree (high priority).
61	Landscape bed	Sugar maple <i>Acer saccharum</i>	---	9.2	9.2	Young	9.2	3.8	Fair	Fair	Fair	---	---

ID #	SITE TYPE (SIZE)	SPECIES	LOWER HUDSON PRISM TIER 1-4 INVASIVE SPECIES	DIAMETER (in) (dead stems)	SINGLE-STEM EQUIVALENT (RSS)	AGE CLASS	TPZ (ft radius)	SRZ (ft radius)	HEALTH + VIGOR	STRUCTURE + FORM	OVERALL CONDITION	OBSERVATIONS	RECOMMENDATIONS
62	Landscape bed	Pin oak <i>Quercus palustris</i>	---	19.0	19.0	Mature	19.0	7.9	Fair	Fair	Fair	---	Clean and raise crown (medium priority).
63	Landscape bed	White ash <i>Fraxinus americana</i>	---	11.6	11.6	Young	8.7	4.8	Poor	Poor	Poor	Severe emerald ash borer in main trunk. Severe dieback in small branches and twigs.	Remove tree (high priority).
64	Landscape bed	Norway maple <i>Acer platanoides</i>	Tier 4 - Widespread	4.3	4.3	Young	3.2	1.8	Fair	Poor	Fair	---	Structural prune (low priority).
65	Landscape bed	Black oak <i>Quercus velutina</i>	---	31.3	31.3	Mature	31.3	13.0	Fair	Good	Fair	---	Clean and raise crown (high priority).
66	Landscape bed	Cutleaf European beech <i>Fagus sylvatica</i> 'Asplenifolia'	---	9.7, 7.4, 9.2	15.3	Young	15.3	6.4	Poor	Fair	Poor	Moderately severe bleeding canker infection in main trunk and scaffold limbs. Moderately severe dieback in 2 upper trunks. 3 moderately severe weak crotches in lower trunk.	Clean and raise crown (high priority). Treat bleeding canker infection.
67	Landscape bed	Princess tree <i>Paulownia tomentosa</i>	Tier 3 - Established	13.8, 11.5	18.0	Mature	13.5	7.5	Good	Fair	Fair	1 moderately severe weak crotch lower trunk.	Clean crown and clear building (medium priority).
68	Landscape bed	Japanese falsecypress <i>Chamaecyparis pisifera</i>	---	20.4, 16.8	26.4	Mature	19.8	11.0	Fair	Fair	Fair	1 moderately severe weak crotch in lower trunk. Moderately severe vine competition in small branches and twigs.	Clear vines (low priority).
69	Landscape bed	Tree of heaven <i>Ailanthus altissima</i>	Tier 4 - Widespread	8.9	8.9	Young	4.5	3.7	Fair	Fair	Fair	Severe vine competition in small branches and twigs.	Clean crown and clear vines (medium priority).
70	Landscape bed	White mulberry <i>Morus alba</i>	Tier 4 - Widespread	4.2, 2.8, 2.2	5.5	Young	4.1	2.3	Poor	Poor	Poor	Severe vine competition in small branches and twigs.	Consider removal due to large mature size, future infrastructure conflicts; apparent volunteer in landscape. If tree is to remain, clear vines (low priority).
71	Landscape bed	Tree of heaven <i>Ailanthus altissima</i>	Tier 4 - Widespread	9.3	9.3	Young	4.7	3.9	Fair	Fair	Fair	Severe spotted lanternfly infestation. Severe vine competition in small branches and twigs.	Clean crown and clear vines (medium priority).
72	Lawn	Norway maple <i>Acer platanoides</i>	Tier 4 - Widespread	33.5	33.5	Over-mature	41.9	14.0	Poor	Poor	Poor	Moderately severe to severe decay in scaffold limbs. Prior large limb failures. Moderately severe dieback in upper trunks and scaffold limbs. Diameter measured at 2'.	Remove tree (high priority).
73	Lawn	Horsechestnut <i>Aesculus hippocastanum</i>	---	39.2	39.2	Over-mature	39.2	16.3	Fair	Poor	Poor	Moderately severe decay in lower trunk. Severe decay in 1 upper trunk. Moderate to severe decay in multiple scaffold limbs. Diameter measured at 3.5'.	Remove tree (high priority).
74	Lawn	Japanese maple <i>Acer palmatum</i>	---	6.5, 6.8	9.4	Mature	11.8	3.9	Fair	Fair	Fair	Moderately severe bark wound in lower trunk. 1 moderately severe weak crotch in main trunk.	---
75	Landscape bed	Colorado blue spruce <i>Picea pungens</i> 'Glauca'	---	9.0	9.0	Young	6.8	3.8	Good	Good	Good	---	---
76	Landscape bed	Japanese maple <i>Acer palmatum</i>	---	6.7, 8.7, 4.6, 6.2, 4.2	14.1	Mature	17.6	5.9	Good	Fair	Good	---	---
77	Landscape bed	Tree of heaven <i>Ailanthus altissima</i>	Tier 4 - Widespread	9.0, 7.7	11.8	Young	5.9	4.9	Fair	Fair	Fair	Moderately severe spotted lanternfly infestation. Severe vine competition in scaffold limbs.	Clear vines (low priority).
78	Landscape bed	Tree of heaven <i>Ailanthus altissima</i>	Tier 4 - Widespread	4.9	4.9	Young	2.5	2.0	Fair	Fair	Fair	Moderately severe spotted lanternfly infestation. Severe vine competition in scaffold limbs.	Clear vines (low priority).
79	Landscape bed	White mulberry <i>Morus alba</i>	Tier 4 - Widespread	6.9, 6.2, 5.7, 5.0	12.0	Young	9.0	5.0	Fair	Poor	Fair	4 severe weak crotches in lower trunk. Severe vine competition in small branches and twigs.	Structural prune, raise crown, and clear vines (low priority).
80	Landscape bed	White mulberry <i>Morus alba</i>	Tier 4 - Widespread	4.7, 4.5, 4.3, 4.2	8.9	Young	6.6	3.7	Good	Fair	Fair	Moderately severe vine competition in small branches and twigs.	Structural prune, raise crown, and clear vines (low priority).
81	Landscape bed	Japanese maple <i>Acer palmatum</i>	---	6.9, 6.6, 4.6, 5.3, 2.8, 3.8	12.8	Mature	15.9	5.3	Fair	Fair	Fair	---	Raise crown (low priority).

ID #	SITE TYPE (SIZE)	SPECIES	LOWER HUDSON PRISM TIER 1-4 INVASIVE SPECIES	DIAMETER (in) (dead stems)	SINGLE-STEM EQUIVALENT (RSS)	AGE CLASS	TPZ (ft radius)	SRZ (ft radius)	HEALTH + VIGOR	STRUCTURE + FORM	OVERALL CONDITION	OBSERVATIONS	RECOMMENDATIONS
82	Landscape bed	Weeping deodar cedar <i>Cedrus deodara</i> 'Pendula'	---	14.8	14.8	Mature	11.1	6.2	Good	Fair	Fair	---	---
83	Lawn	Flowering dogwood <i>Cornus florida</i>	---	9.7	9.7	Mature	9.7	4.0	Poor	Poor	Poor	Very severe split in main trunk. Very severe decay in lower trunk. Moderate dieback in small branches and twigs.	Remove tree (medium priority).
84	Landscape bed	Holly species <i>Ilex spp.</i>	---	5.5, 4.1, 3.6, 3.5, 3.1	9.0	Mature	6.8	3.8	Fair	Fair	Fair	Severe vine competition in small branches and twigs. Moderately severe cottony camellia scale infestation.	Clear vines (low priority).
85	Landscape bed	Holly species <i>Ilex spp.</i>	---	6.2, 2.4	6.6	Mature	5.0	2.8	Fair	Fair	Fair	Same species as tree #84. Severe vine competition in small branches and twigs. Moderately severe cottony camellia scale infestation.	Clear vines (low priority).
86	Planting strip (4')	Norway maple <i>Acer platanoides</i>	Tier 4 - Widespread	13.4	13.4	Mature	13.4	5.6	Fair	Fair	Fair	Street tree.	Clean and raise crown (medium priority).
87	Planting strip (3.75')	Norway maple <i>Acer platanoides</i>	Tier 4 - Widespread	11.5	11.5	Mature	11.5	4.8	Fair	Fair	Fair	Street tree. Moderate lean in main trunk.	Clean and raise crown (medium priority).
88	Planting strip (4.5')	Norway maple <i>Acer platanoides</i>	Tier 4 - Widespread	14.5	14.5	Mature	14.5	6.0	Poor	Fair	Poor	Street tree. Moderate dieback in scaffold limbs. Moderate decay in 1 upper trunk.	Clean crown (high priority).