

**BOROUGH OF NORTH PLAINFIELD
263 SOMERSET STREET
NORTH PLAINFIELD, NJ 07060
(908) 769-2918**

CERTIFICATE OF APPROPRIATENESS (C of A)

NORTH PLAINFIELD HISTORIC PRESERVATION COMMISSION

Application #01-06-22-2021

DATE: March 8, 2023

APPLICANT/OWNER/ADDRESS: Yeshiva Tiferes Boruch
21 Rockview Avenue (112 Linden Ave), North Plainfield, NJ

CONTACT INFO: Rabbi Yochanan Cohen 732-492-3404

We approve the following at 21 Rockview Avenue (112 Linden Avenue) as follows:

This is an amendment to the existing COA initially approved February 9, 2022 and previously amended and finalized April 11, 2022.

This approval is based on those architectural drawings provided to the HPC on March 3, 2023 and discussed at the March 8, 2023 HPC meeting. Plan Z-1 and Lighting Plan SP-107.00 were revised as per the HPC to have the revision date of March 8, 2023 added. These plans were provided to the HPC on March 16, 2023.

Hard copies of renderings shown at the March 8, 2023 HPC meeting were not provided.

Product cut sheets for newly approved or previously approved doors, windows, hardware and building light fixtures and any related documents are included with this COA.

Any fencing removal detail is no longer included in this COA and is now a separate Fence COA.

Any future revisions to the plans included here will void this approval and will require HPC review.

* The proposed building will front Linden Ave and be a beige stucco and wood shingle sided building with slate roofing and brick chimney. The Study Hall portion of the building will have a sloped slate parapet roof to hide the HVAC units. The Campus entry door will have a vented parapet roof. The small bump out on the Washington side will have a metal roof. Wood sided portions of the building will flare out over the ground floor. See plan Z-1.

* Roof gables facing Washington and Sycamore and three windows will have wood half timbering to match the mansion as shown. Roof gables will have decorative brackets to match the mansion. See Plan Z-1.

* Copper leaders and downspouts will be installed.

* A stone water table will match the stone on the existing mansion and will surround the new building excluding the 3 sides of the Study Hall section as shown on Plan Z-1.

* Four stained glass windows will be installed; two on either side of the Sycamore facing first floor center window and two on the Linden facing side as seen in Plan Z-1.

* Anderson Woodwright or Architectural Series full divided light (7/8' Grille bar width) custom windows will be installed. The majority of the windows are double hung. There will be 2 casement windows. The color will be a beige or brown to coordinate with the mansion.

* Nine smaller double hung windows will have upper sashes with 16 outside edge divided lights to match the mansion as shown in Plan Z-1 and Window product sheets. The color will be a beige or brown to coordinate with the mansion. See window product sheet page 18 of this document.

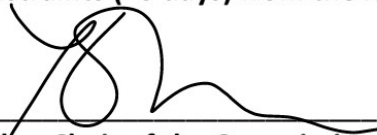
* Stone window arches and crown moldings to match the mansion will be installed over windows as seen in Z-1.

- * Appropriate exterior wall sconces and main Linden entry hanging light will be fixtures shown and marked in the Tudor Artisans product sheet included.
- * A total of seven Holophane 8 foot light poles will be installed on the grounds as shown in in SP-107.00. Poles will be Holophane Nicoma Park style cast iron poles. Fixtures will be the Arlington Series AUCL2 Arlington Series with spike finials. The five lights on the Linden side will have House-side shield installed to prevent light trespass to neighbors and street. Color Temperature will be 2700 CCT.
- * Single entry doors facing Sycamore and Linden will be Anderson African Mahogany Tudor Series with custom hardware. The double entry door on Linden will also be Anderson African Mahogany Tudor Series double door with transom window and will have a stone arch to match the main Rockview facing entry door of the mansion. Doors will have period appropriate iron hardware. See doors and hardware shown in the Anderson Product sheets included.
- * Landscape design plans were not submitted prior to the March 8, 2023 meeting and will be reviewed for approval at a later date. Arborvitae was however approved to hide the bump out on the Washington facing side.

SUBJECT TO THE FOLLOWING:
CONSTRUCTION PERMITS

SECURING OF PLANNING BOARD APPROVAL AND

The applicant may appeal any denial or condition to the Board of Adjustment within the legal time constraints (20 days) from the hearing, as per Borough Ordinance 22-89.4.



Katherine Miller, Chair of the Commission

3/20/23

Date

Note: Please display this C of A in window along with any Construction Permits for use by the Borough Inspectors to ensure compliance.

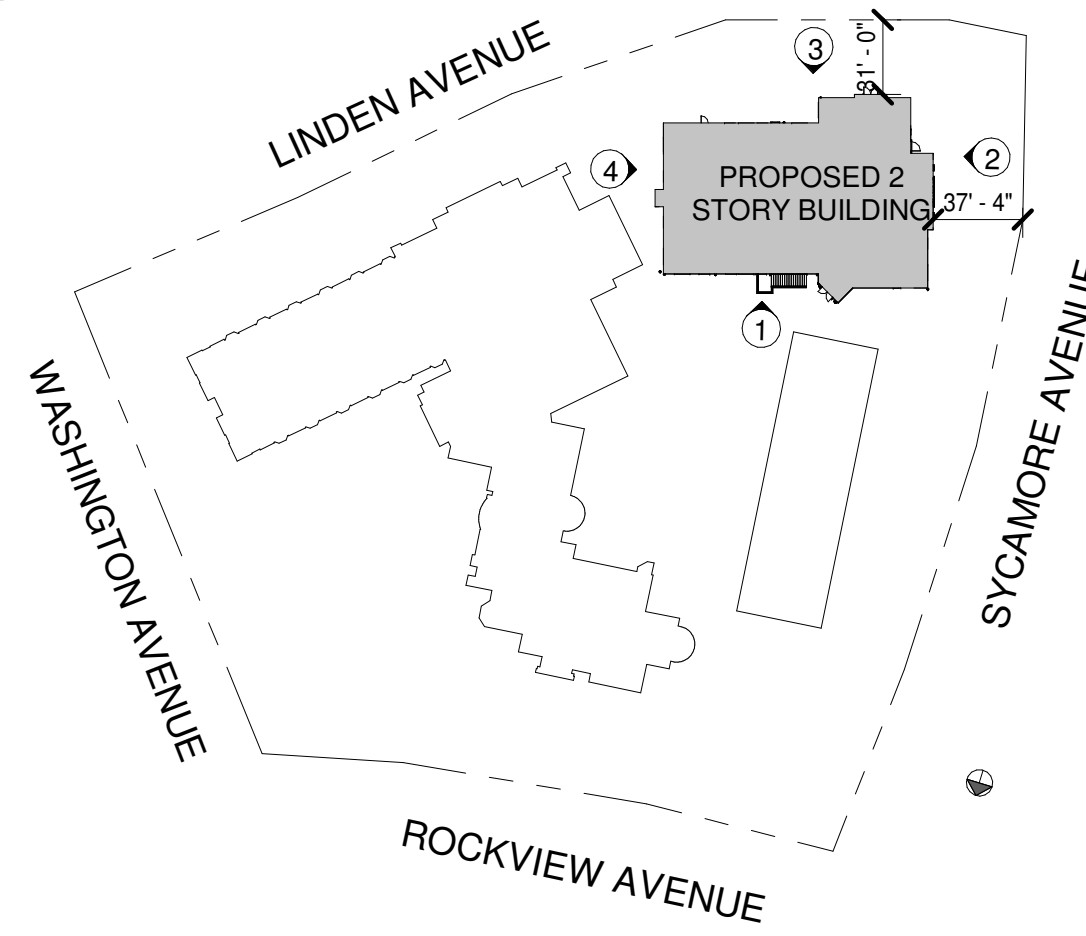
PROPOSED NEW BUILDING FOR:

Springfield Yeshiva

21 Rockview Ave

Lot: 1, Block: 134

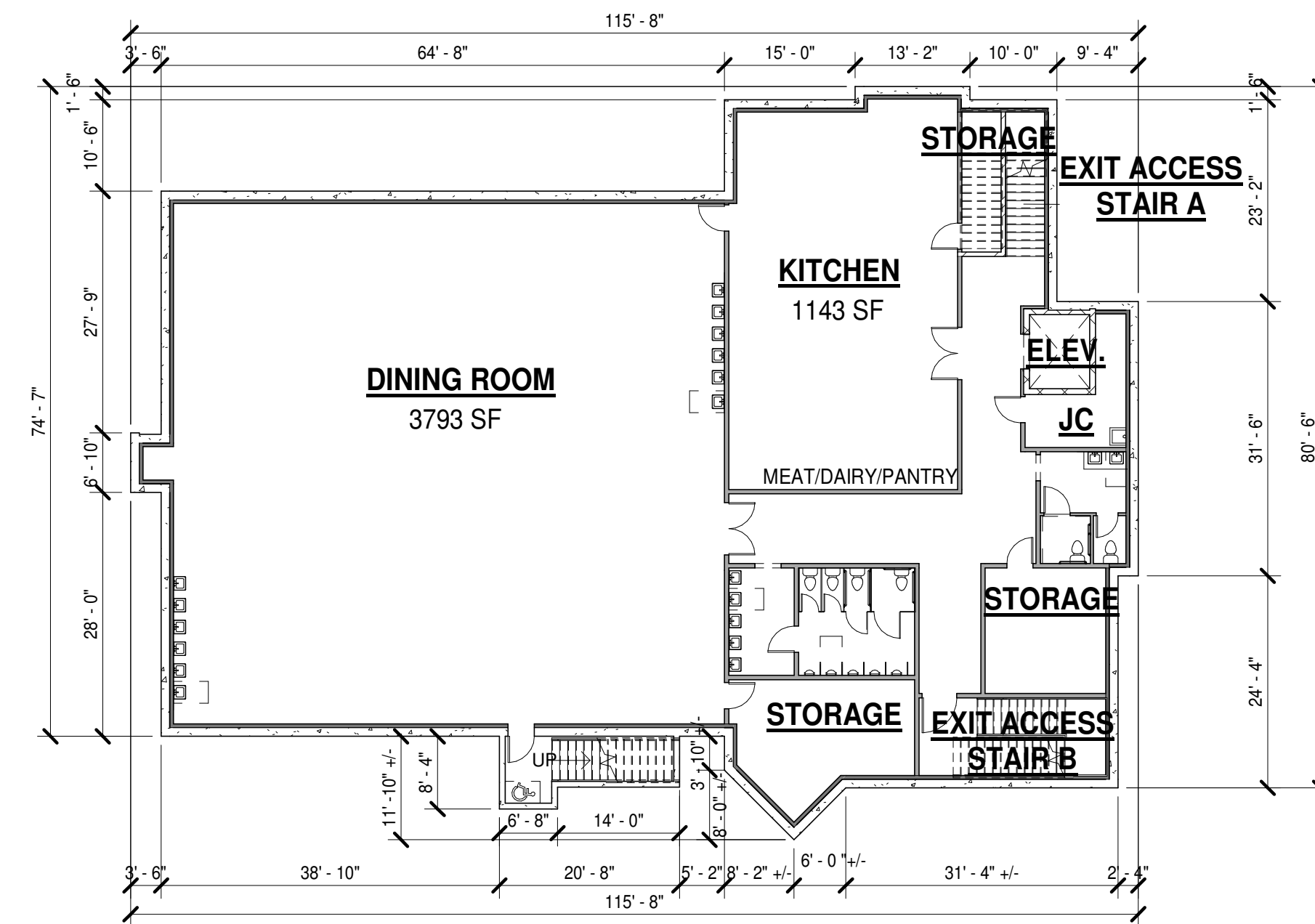
North Plainfield, New Jersey



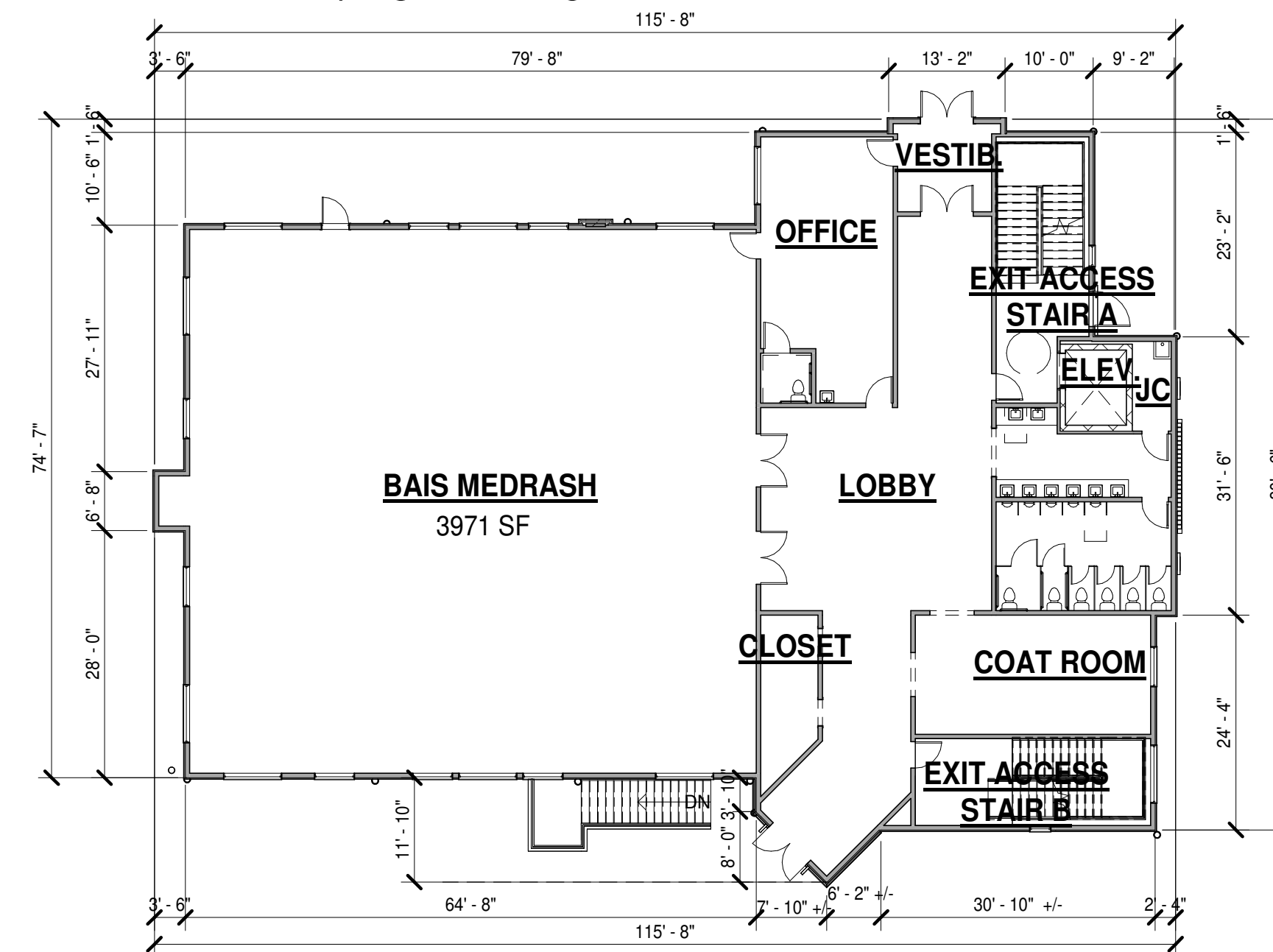
Key Plan
Scale: 1" = 80'-0"

OCCUPIABLE AREAS
(REFER TO ENGINEERS SITE PLAN FOR FOOTPRINT S.F.)

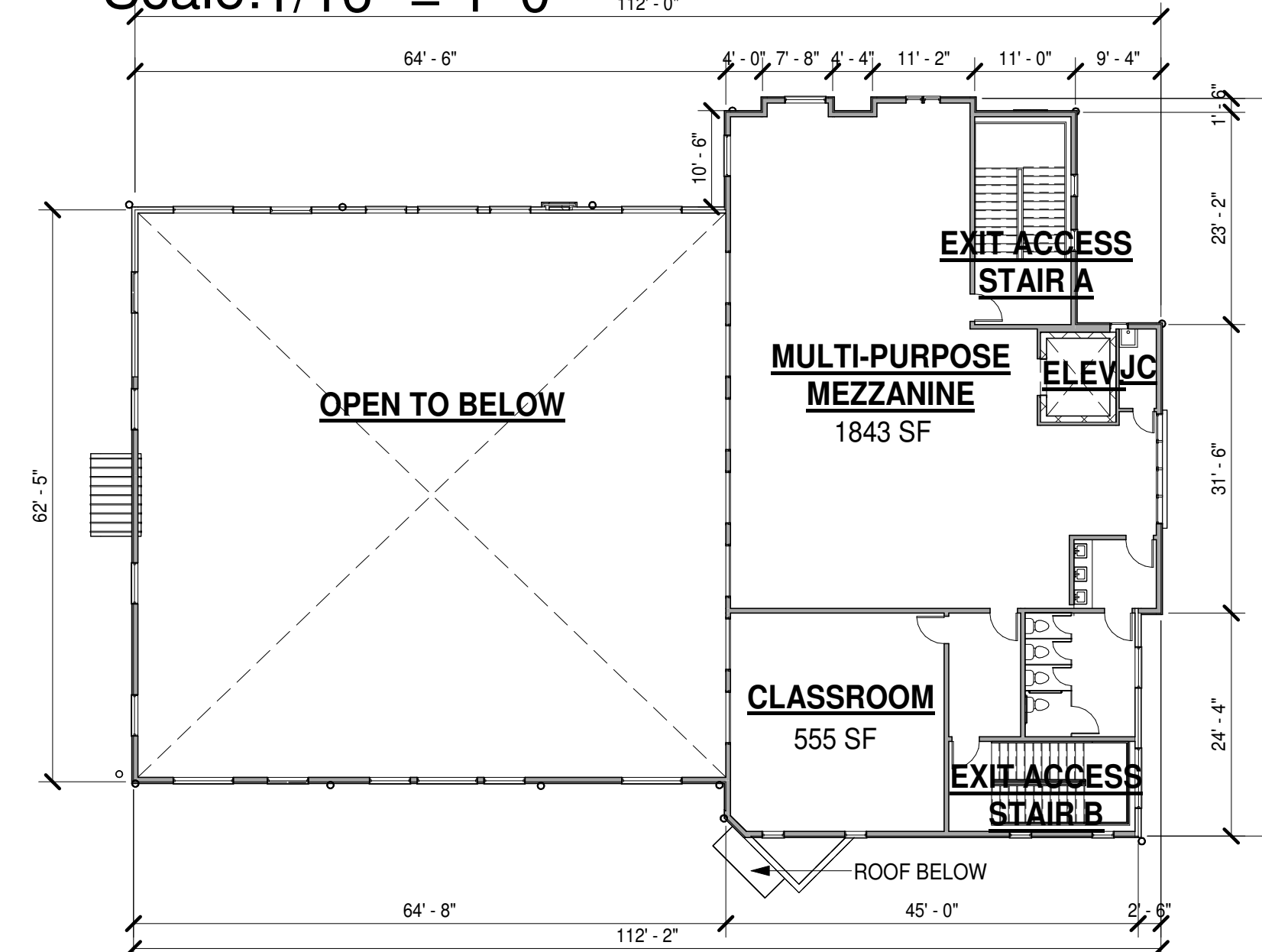
BASEMENT AREA	7,669 S.F.
FIRST FLOOR AREA	7,669 S.F.
SECOND FLOOR AREA	3,539 S.F.
TOTAL BUILDING AREA	18,877 S.F.



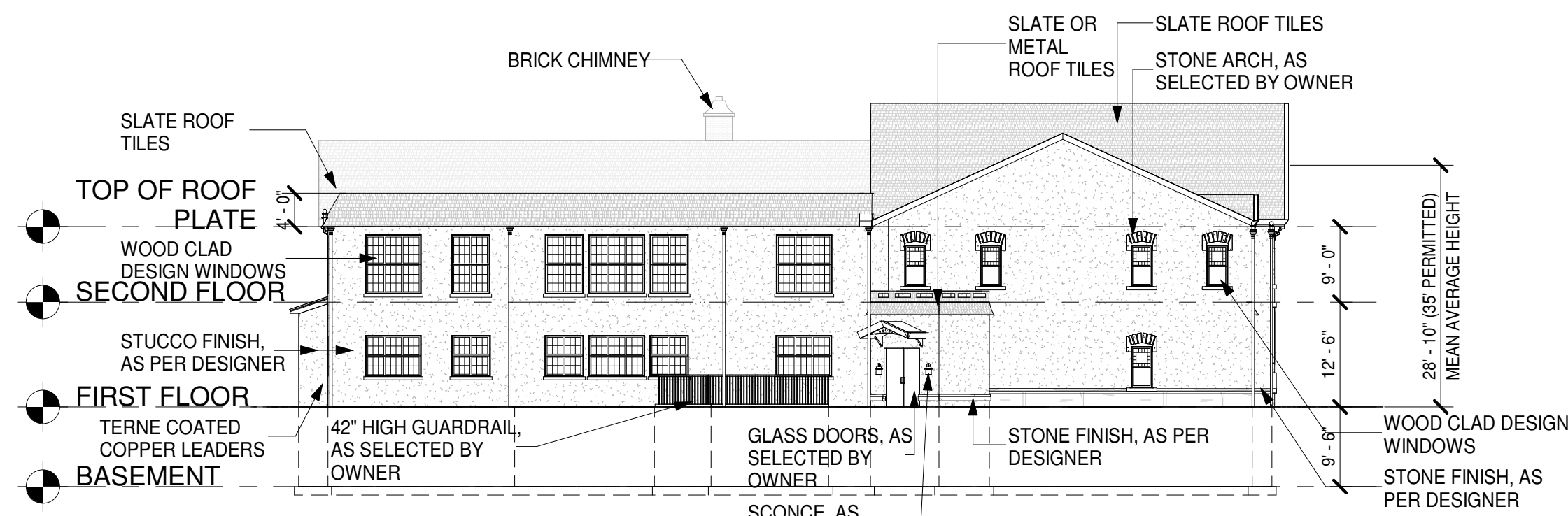
FINISHED BASEMENT PLAN
Scale: 1/16" = 1'-0"



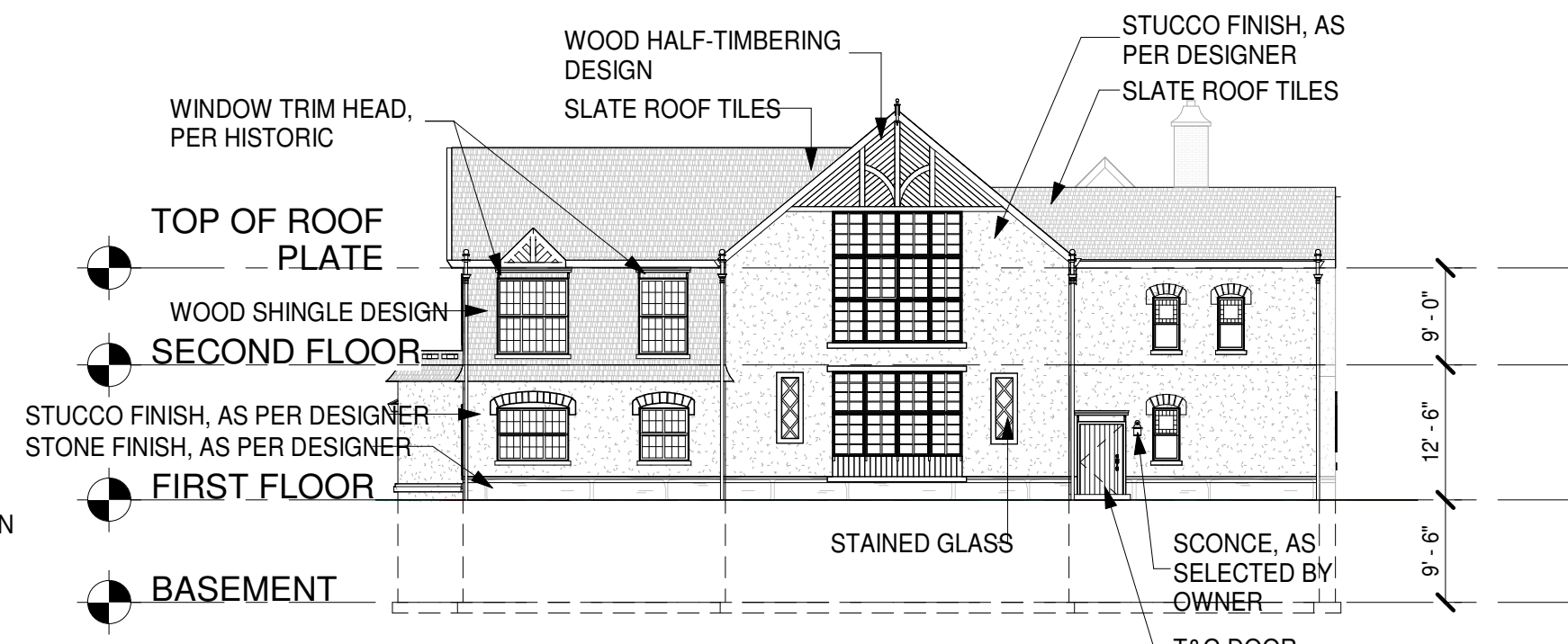
FIRST FLOOR PLAN
Scale: 1/16" = 1'-0"



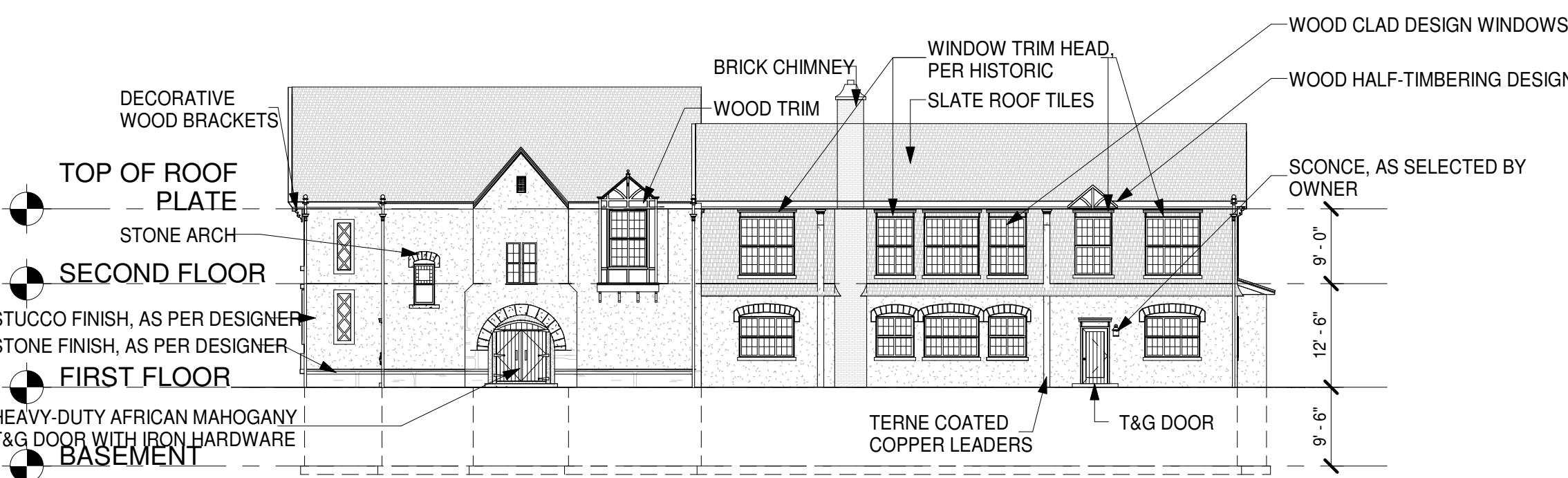
SECOND FLOOR PLAN
Scale: 1/16" = 1'-0"



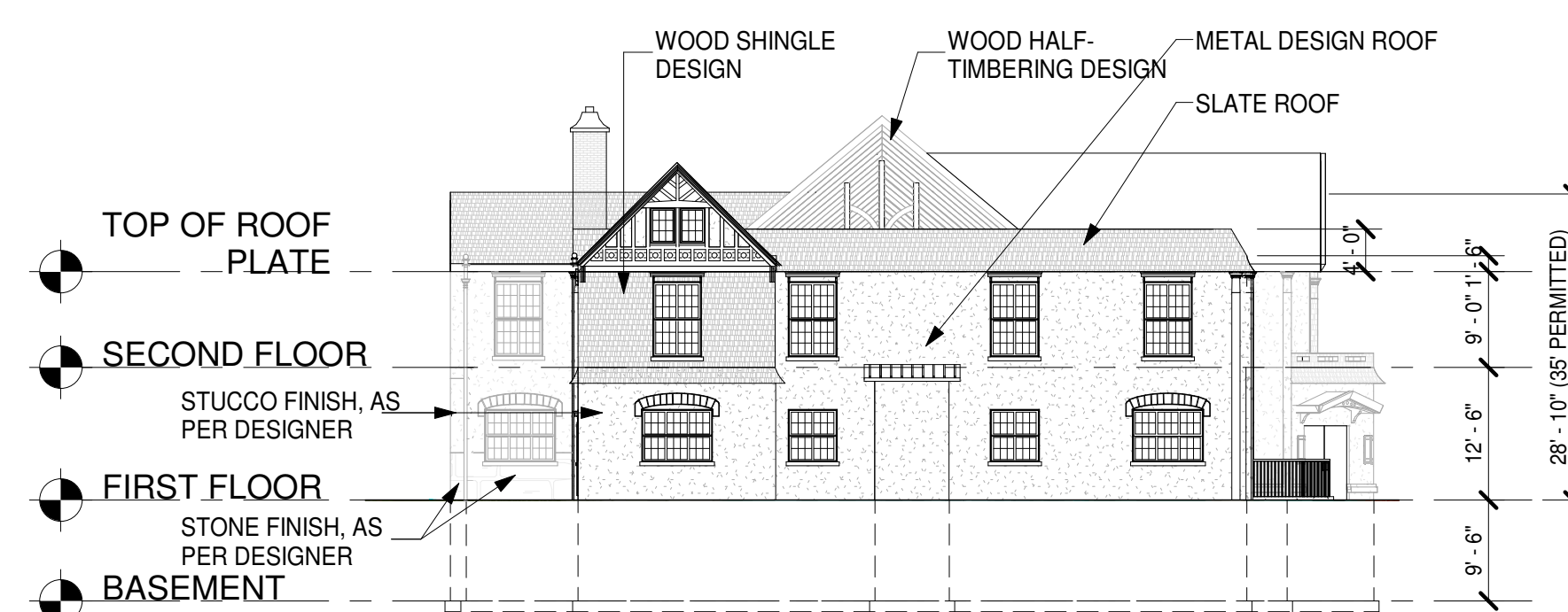
1 Campus Elevation
1/16" = 1'-0"



2 Sycamore Elevation
1/16" = 1'-0"



3 Linden Elevation
1/16" = 1'-0"



4 Washington Elevation
1/16" = 1'-0"

FOR ZONING PERMIT ONLY, NOT FOR CONSTRUCTION

PROPOSED NEW BUILDING FOR:
Springfield Yeshiva

21 Rockview Ave

Lot: 1, Block: 134

North Plainfield, New Jersey

B+F DESIGN
STUDIO & ARCHITECTURAL SERVICES



377 MONMOUTH AVENUE, SUITE 207
LAKEWOOD, NEW JERSEY 08701
P: 732-961-1202 E: INFO@BDESIGNNJ.COM

Description

REVISION LEGEND

Lawrence S. Schreiber AI 1005-
© 2022 B + F Design Studio and Architectural Services L.L.C.
NJ Certificate of Authorization No. JC 90124009

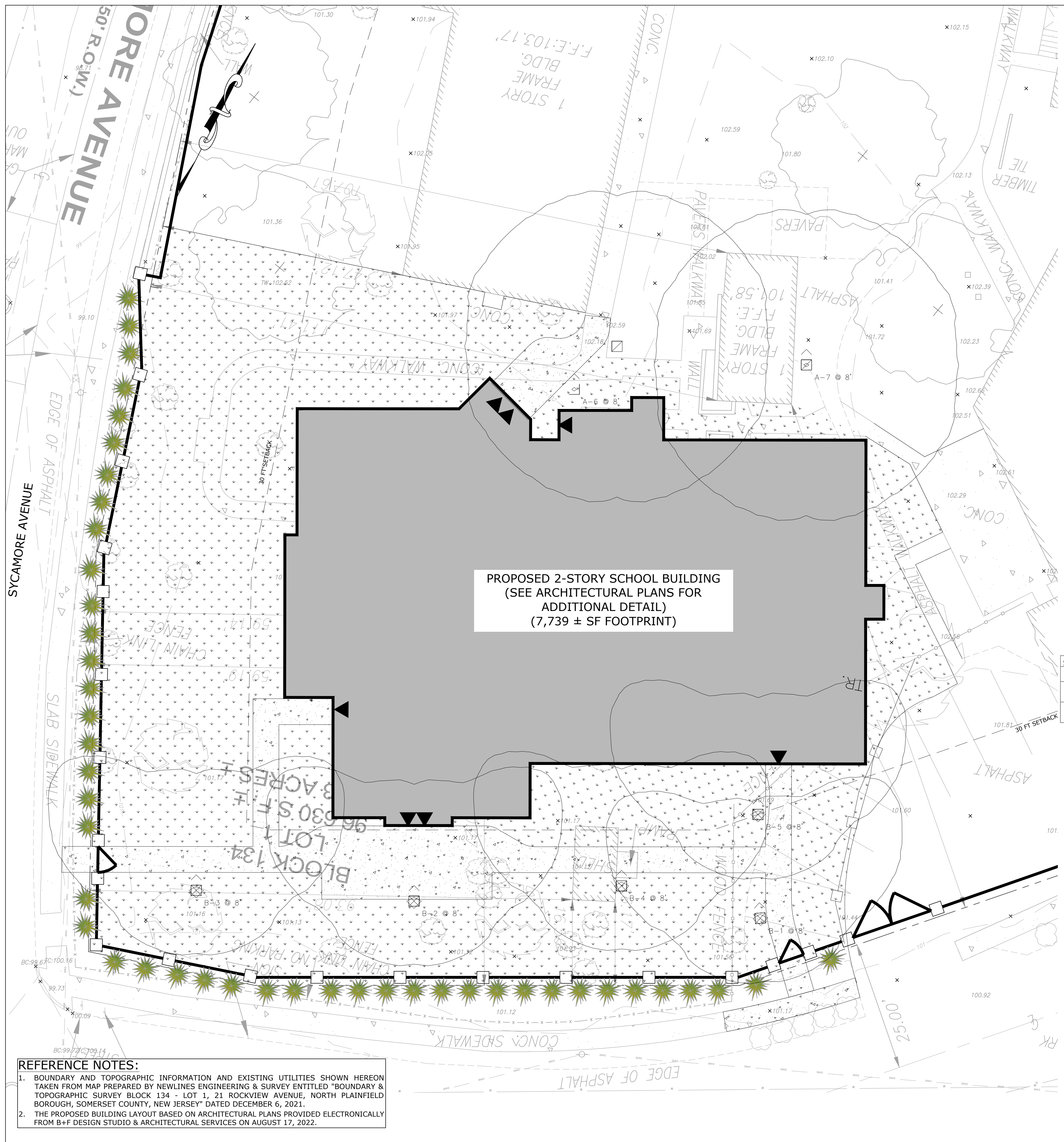
COVER SHEET

JOB #: 19CN7436
DWN: MF
CHK: BF/LSS
DATE: 03/08/2023

DRAWING NO.

Z-1

3/8/2023 8:46:56 PM
P:\Client Files\19 Commercial\New Construction\19CN7436 - Springfield Yeshiva\Architectural\Revit\Springfield Yeshiva-PD15.rvt



REFERENCE NOTES:

- BOUNDARY AND TOPOGRAPHIC INFORMATION AND EXISTING UTILITIES SHOWN HEREON TAKEN FROM MAP PREPARED BY NEWLINES ENGINEERING & SURVEY ENTITLED "BOUNDARY & TOPOGRAPHIC SURVEY BLOCK 134 - LOT 1, 21 ROCKVIEW AVENUE, NORTH PLAINFIELD BOROUGH, SOMERSET COUNTY, NEW JERSEY" DATED DECEMBER 6, 2021.
- THE PROPOSED BUILDING LAYOUT BASED ON ARCHITECTURAL PLANS PROVIDED ELECTRONICALLY FROM B+F DESIGN STUDIO & ARCHITECTURAL SERVICES ON AUGUST 17, 2022.

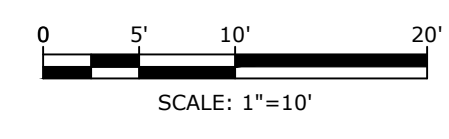
Luminaire Locations						
Location						
No.	Label	X	Y	Z	MH	Tilt
1	B	81.77	-20.29	8.00	8.00	0.00
2	B	15.00	-17.00	8.00	8.00	0.00
3	B	-27.00	-15.00	8.00	8.00	0.00
4	B	55.00	-14.00	8.00	8.00	0.00
5	B	81.30	-20.20	8.00	8.00	0.00
6	A	45.75	81.75	8.00	8.00	0.00
7	A	90.50	86.50	8.00	8.00	0.00

Statistics						
Description	Symbol	Avg	Max	Min	Max/Min	Avg/Min
PARKING LOT	X	0.1	1.0	0.0	N/A	N/A
SIDEWALK	K	2.6	5.6	1.0	5.6	2.6
SITE CALCULATIONS	+	0.3	5.6	0.0	N/A	N/A

Schedule									
Symbol	Label	QTY	Manufacturer	Catalog	Description	Number Lamps	Lamp Output	LLF	Input Power
⬆	A	2	Holophane	AUGL2 P20 27K XX FC	Utility Arlington FCO LED 2, P20, 2700K, Type 5 Optic	1	3903	0.9	45
⬆	B	5	Holophane	AUGL2 P20 27K XX FC HSS	Utility Arlington FCO LED 2, P20, 2700K, Type 3 Optic, with House Side Shield	1	2644	0.9	45

Note

- Readings shown are based on a total LLF of as shown at grade. Data references the extrapolated performance projections in a 25c ambient based on 10,000 hrs of LED testing (per IESNA LM-80-08 and projected per IESNA TM-21-11).
- Please refer to the "luminaire locations" table for mounting heights.
- Product information can be obtained at www.AcuityBrands.com



SCHEDULE OF REVISIONS			
NO.	DATE	REVISION	BY
1.	03/08/2023	REVISED PER HPC MEETING	ENS

OWNER/APPLICANT
YESHIVA TIFERES BORUCH, INC.
 112 LINDEN AVENUE
 NORTH PLAINFIELD, NJ 07060

E 2 PROJECT MANAGEMENT LLC
 57 HIBERNIA AVENUE
 ROCKAWAY, N.J. 07866
 PHONE: (973) 299-5200
 FAX: (973) 299-5059
www.E2PM.com



THIS DRAWING DOES NOT INCLUDE NECESSARY COMPONENTS FOR CONSTRUCTION SAFETY. ALL CONSTRUCTION SHALL BE DONE IN COMPLIANCE WITH THE OCCUPATIONAL SAFETY AND HEALTH ACT OF 1970 AND ALL RULES AND REGULATIONS THEREBY APPLICABLE. THIS DRAWING AND THE DESIGN THEREON OR CONSTRUCTION ACCORDING HERETO ARE THE PROPERTY OF E2 PROJECT MANAGEMENT LLC AND SHALL NOT BE REPRODUCED, ALTERED OR COPIED WITHOUT WRITTEN PERMISSION. SHALL NOT BE USED IN ANY MANNER DEPRECIABLE TO ITS INTEREST AND SHALL BE RETURNED UPON REQUEST.

N.J. ENGINEERING CERTIFICATE OF AUTHORIZATION No. 24GA28118200

I CERTIFY THAT THESE PLANS HAVE BEEN PREPARED UNDER MY SUPERVISION

CHARLES J. STEWART, P.E., P.L.S. N.J. NO. 24GB03588400
 REGISTERED PROFESSIONAL ENGINEER AND LAND SURVEYOR

PROJECT NAME
YESHIVA NEW ACADEMY BUILDING
 TAX LOT 1
 BLOCK 134
 21 ROCKVIEW AVENUE
 BOROUGH OF NORTH PLAINFIELD
 SOMERSET COUNTY, NJ

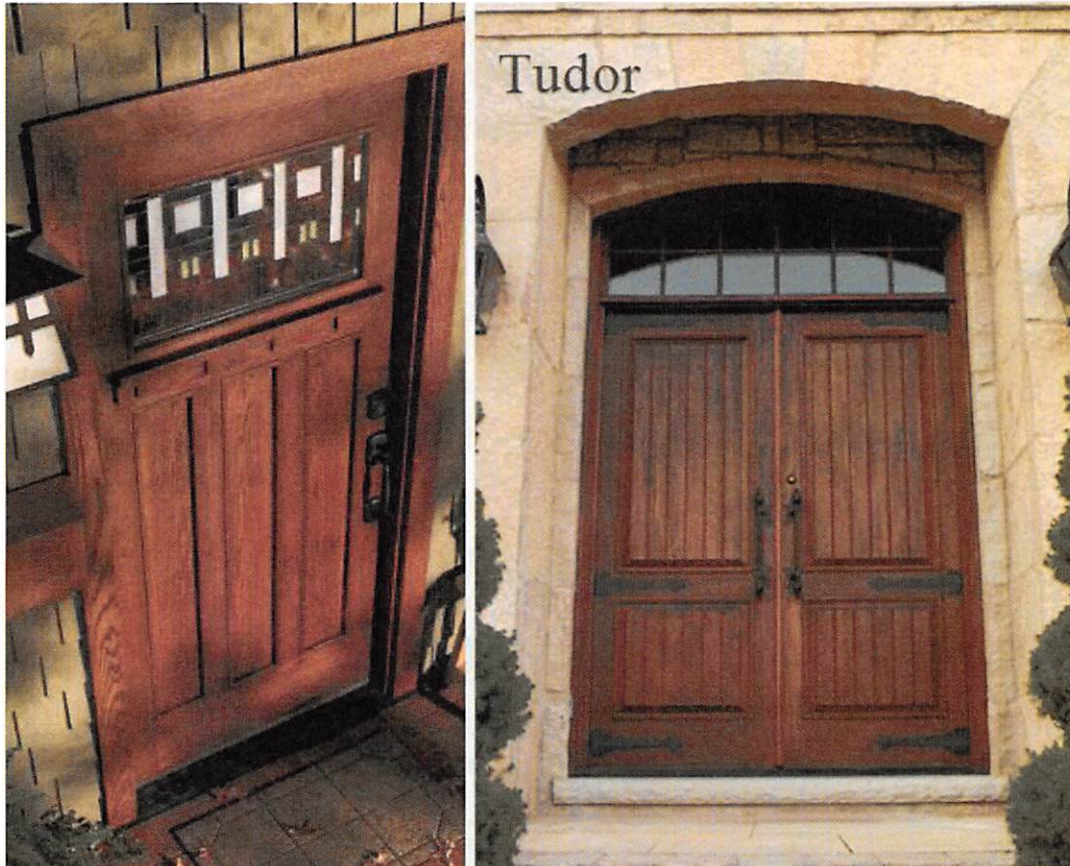
DRAWING TITLE
LIGHTING PLAN

CHECKED BY: CS	DRAWN BY: ENS
SCALE: 1" = 10'	SHEET NO: 8 OF 15
PROJECT #: P-22-47-01	FIRST ISSUE: 8/24/2022
DRAWING NO.	

SP-107.00

DOORS WILL BE AFRICAN MAHOGANY WOOD T&G
BY ANDERSEN TUDOR SERIES WITH CUSTOM HARDWARE

Andersen



(See this product on display at [Phoenixville](#), [Doylestown](#), [Kennett Square](#))

Andersen entrance doors, handcrafted from fine woods, are distinguished by their attention to elegant architectural detail, including stylish transoms and sidelights. The company is also known for its energy-efficient patio doors, available in both hinged and sliding designs, as well as for its coastal storm doors.

[LEARN MORE AT THEIR WEBSITE](#)

Tudor Artisans

Lighting

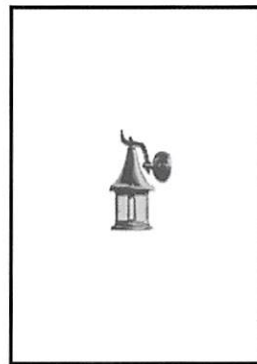


Bracket Lantern No. 465

- Height Overall : 15"
- Lantern Size : 7" x 13"
- Backplate : 4 1/2" x 6"
- Wall to Center : 7 1/2"
- Cylinder Size : 4" x 6"



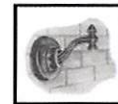
OD-Bracket
Backplate 6"
Wall to center 7"



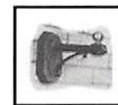
Bracket Lantern No. 466

- Height Overall : 13"
- Lantern Size : 6" x 10 1/2"
- Backplate : 4 1/2" x 6"
- Wall to Center : 5"
- Cylinder Size : 4" x 4"

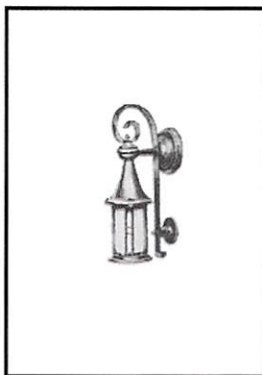
Available with the below brackets:



OD-Bracket
Backplate 6"
Wall to center 7"

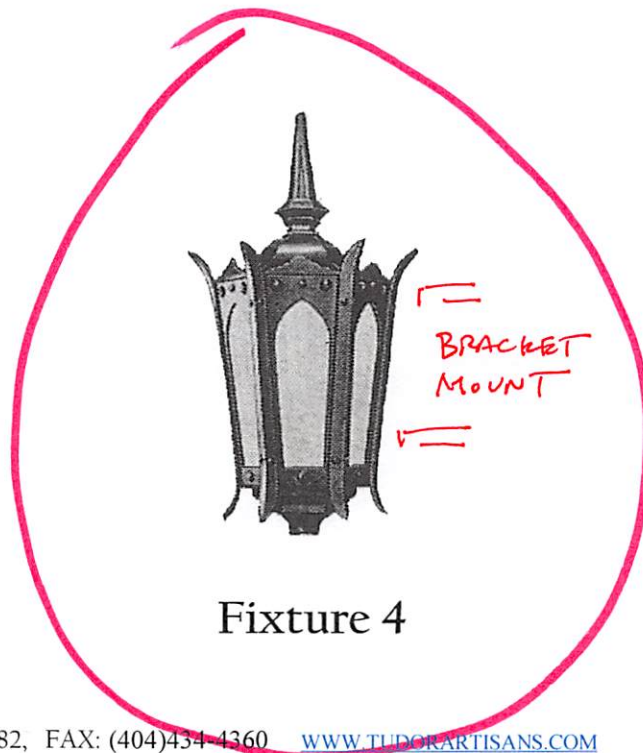


ND-Bracket Dimensions:
Backplate 4 1/4" x 6 3/4"
Wall to center 7 1/2"



Bracket Lantern No. S-465

- Height Overall : 19 1/2"
- Lantern Size : 6" x 12"
- Backplate : 6" x 3 1/2"
- Wall to Center : 6 1/4"
- Cylinder Size : 4" x 6"



Fixture 4



LED Post-Top Lanterns

Full Cutoff Series



Holophane® LED Post-top Full Cutoff Lanterns enhance your site by day while preserving dark skies at night.

The vintage styling of Holophane luminaires has adorned urban streets and parks since the early 20th century. Combining improved LED technology and timeless design, this series of utility luminaires features a “nighttime friendly” optical design to meet the modern needs of sustainable urban planning and energy management.

Holophane LED Post-top Full Cutoff Lanterns are designed to meet the IESNA requirements for full cutoff classification and reduced impact on urban sky glow. With a wide range of distributions and lumen packages available in three classic form factors, these powerful LED lanterns are “feature-rich” and provide lighting designers with a high level of design flexibility in color temperature, optical distribution choices, and controls technology.

At a Glance

Three traditional daytime forms perfect for most downtown areas, historical districts and many other areas where the classic period styling is desired

Modern LED technology drives outstanding energy savings over HID incumbents –as much as 60% in most cases

Full Cutoff optics provide high visibility in the space while protecting the night skies from light pollution.

Four lighting distribution options to choose from for roadway and area lighting applications

Utility friendly features such as tool-less access and pre-wired terminal block mean simplified installation and maintenance

Optional Extreme Surge Protection Device safeguards your system from lightning strikes and voltage spikes

Optional DALI drivers are available upon request for a wide range of switchable and dimmable LED requirements.

Variety of color temperatures available, including 2700K and 3000K CCT for a warm light that provides higher color rendering (CRI) than HPS sources. Also - a wildlife friendly “true Amber” color is available for coastal applications.

Robust thermal management decreases heat to extend the life of the LED system to over 20 years

Updated controls options such as internal- or external-mounted 3 and 7-pin photo control, part-night dimming controls, factory-programmable drivers or our DLL Elite 20-year photocell

CSA Listed with proven testing to ensure safe, reliable operation



Consistent with LEED® goals
& Green Globes™ criteria
for light pollution reduction



Typical Applications

- City Streets
- Parks
- Residential Areas
- Campuses
- Walkways
- Public Squares



Arlington Full Cutoff LED



Taft Full Cutoff LED



Washington Full Cutoff LED

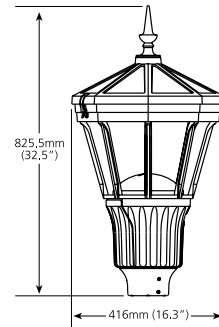


AUCL2

Arlington® Full Cutoff LED



The Arlington LED presents a classic octagonal form factor commonly desired in many period style architectural sites and streetscapes. Capitalizing on the Holophane heritage of over a century in optical excellence, the Arlington provides a classic form factor for daytime appeal and a comfortable light source that is nighttime-friendly for the environment.



AUCL2 | Arlington Full Cutoff LED

Max Weight: 18.43 kg (40 lbs)

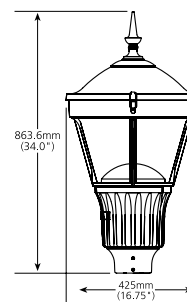
Max EPA: 1.38 sqft



PUCL2

Taft Full Cutoff LED

When a round form factor is desired, the Taft LED offers an attractive, reliable solution for applications requiring full cutoff distributions. Decorative options are also available to customize your Taft LED further – choose from either of two finial tops or even configure your luminaire with an optional photocontrol receptacle.



PUCL2 | Taft Full Cutoff LED

Max Weight: 17.69 kg (39 lbs)

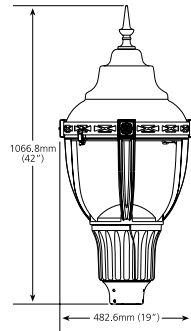
Max EPA: 1.24 sqft

WFCL2

Washington Full Cutoff LED



With a slightly larger form factor than the Arlington or Taft series, the Washington provides a solution that scales up nicely with greater mounting heights. It also offers a more traditional acorn shape with more ornate decorative features. All of the Full Cutoff LED Series offer a diverse set of optical distributions and even a house-side shield option.



WFCL2 | Washington Full Cutoff LED

Max Weight: 25.6 kg (57 lbs)

Max EPA: 1.72 sqft

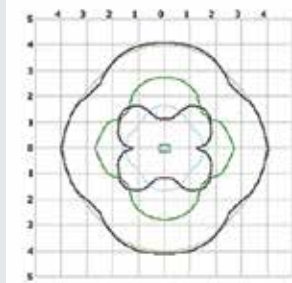


Avoid light trespass with house-side shield option

The Full Cutoff LED Series can eliminate not only upward sky-glow but it also is now available with an optional house-side shield to rectify problems arising from light trespass. The house-side shield feature can be purchased as a factory-installed option or installed later in the field if needed.

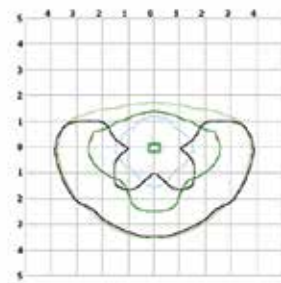
L5 ISO footcandle Plot

Without House-side Shield



BUG Rating B4-U0-G2

With House-side Shield



BUG Rating B2-U0-G2



LED Post-top Full Cutoff LED

Period Style with Breakthrough Performance

- + **Full Cutoff Optics** provide performance while protecting the night skies from excessive light pollution
- + **Superior optical engineering** for maximum lighting efficiency and uniformity
- + **Designed for maximum thermal efficiency** to further enhance system life
- + **Utility friendly features** such as hinged door with tool-less latch entry and pre-wired terminal block
- + **Decorative options** and a wide choice of durable paint finishes to enhance your site or streetscape
- + **Controls options** include optional 3- or 7-pin photocontrol receptacle and factory programmed driver

Choice of decorative finial or top-mount photo receptacle

Three Form Factors to Choose From

IP Rated Full Cutoff Optical Chamber

Robust Cast Aluminum Construction

High Performance LED Engine



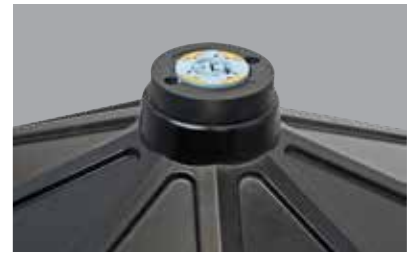
Thermally Engineered for
20-Years Expected Service Life



Utility-friendly Design Features

Your choice of decorative finials or photo receptacle

The Full Cutoff LED Series is available with your choice of ball or spike finials, or you can replace the finial feature with an optional photocontrol receptacle. Rotatable twist-lock receptacles are available in either 3-pin or 7-pin configurations.



Increase Savings with Controls

Enhancing energy savings by incorporating controls can save an additional 25% to 45% energy. Popular outdoor control strategies include dimming, scheduling and monitoring. Lowering energy consumption through the use of controls is a “green” solution too - helping to enhance sustainability and reducing the impact of our carbon footprint.

The Foundation of Controls

Standards such as the Acuity Controls designed 7-pin photocontrol receptacle ensure future-proofing of your luminaire so that additional features and capabilities can be enabled as they become available.

DLL Elite

With superior LED inrush current protection and TRIAC-assisted relay, the DLL Elite LED photocontrol is designed to last as long as the LED lighting system itself - 20 years or longer.

DSN Wireless Network Controls

The DTL DSN solution combines the reliability of the DLL Elite photocontrol, designed for 20-year operating life, with the performance of the Itron network platform for unparalleled functionality and adaptive control of street lighting systems. Offers access to a multi-application platform, providing one network for critical infrastructure solutions like smart lighting, smart metering and other outdoor IoT technologies.



The Take Away

Multiple traditional daytime forms:

- + Arlington (AUCL2)
- + Taft (PUCL2)
- + Washington (WFCL2)

Variety of color temperatures (70CRI):

- + True Amber
- + 2700K CCT
- + 3000K CCT
- + 4000K CCT
- + 5000K CCT

A variety of optical distributions

- + Type 2: Full Cutoff
- + Type 3: Full Cutoff
- + Type 4: Full Cutoff
- + Type 5: Full Cutoff
- + House-Side Shielding option

Controls options:

- + 3 pin (internal or external)
- + 7 pin (internal or external)
- + DLL Elite 20-year photocell
- + ROAM networked controls

Customize lumen output:

- + Factory Programed Driver (FPD)

Variety of durable color finishes:

- + Black
- + Gray
- + Graphite
- + Green
- + White
- + Bronze
- + Custom Match



Acuity Brands Lighting, Inc.

Holophane Headquarters, 3825 Columbus Road, Granville, OH 43023

Acuity Brands Lighting Canada, Inc., 35B Minthorn Blvd., Markham, ON., L3T 7N5

Holophane, S.A. de C.V., Km. 31 Carretera Mexico-Cuautitlan 54900 Tultitlan Edo. De Mexico

Contact your local Holophane factory sales representative for application assistance, and computer-aided design and cost studies.

Warranty Five-year limited warranty. Full warranty terms located at www.acuitybrands.com/CustomerResources/Terms_and_conditions.aspx

Visit our web site at www.holophane.com

Product specifications may change without notice. Please contact your local Holophane factory sales representative for the latest product information.

LED Energy Savings over HID Based on Wattage

HID LAMP TYPE	INPUT WATTS	LED PERFORMACE PACKAGE	INPUT WATTS	MINIMUM ENERGY SAVINGS
70W HPS	91	P10 (3K)	35	62%
100W HPS	129	P20 (3K)	35	73%
150W HPS	185	P30 (3K)	76	60%
175W HPS	198	P40 (4K)	102	48%
250W HPS	295	P50 (4K)	141	52%

Barton Ross & Partners LLC

Architects

February 10, 2022

Katherine Miller, Chair
North Plainfield Historic Preservation Commission
263 Somerset Street
North Plainfield, New Jersey 07060

Delivered via email only

Re: Yeshiva New Academic Building, 21 Rockview Avenue, North Plainfield, New Jersey
Historic Preservation Commission – HPC Architectural Conditions Approval submission

Dear Ms. Miller,

Per the HPC approval on 2/8/22, please find enclosed our revised Sheet 1.04 with additional window crown moldings on the Washington Ave. façade and our exterior lighting specifications. Let us know if you have any questions on these submittals.

Tudor & Gothic Revival 1910 - 1940

Influenced by the arts and crafts style and ideology, both Tudor and Gothic revival styles were against over ornamentation and the mass production aesthetic brought on by the Victorian era. Historical influences came by way of medieval architecture, cottages, quaint settings and the romance of both England and Hollywood. Half-timbered facades, rustic stonework, leaded glass windows and cozy wood trimmed interiors are some of the hallmarks of the Tudor and Gothic revival styles. With many homes built in the 1910's and 20s in suburban areas of town, Tudor houses were often designed with a neighborhood plan in mind in order to showcase architectural individuality and neighborhood uniformity. Lighting from the time is often very rustic in appearance with an emphasis on crests, candles, hammered details and emblems of chivalry and knighthood.

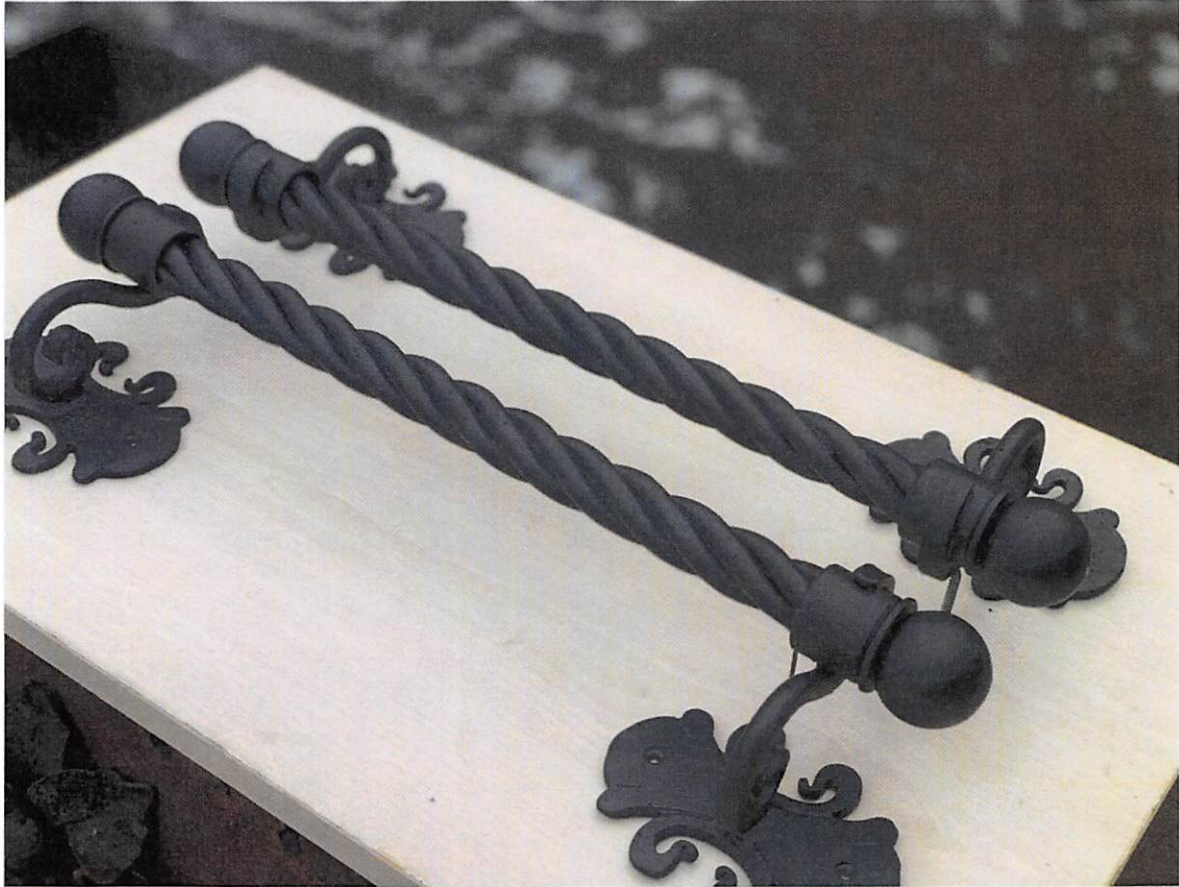
Thank you,

Barton Ross & Partners, LLC Architects



Barton Ross, AIA, AICP, LEED AP BD+C
President

cc: Rabbi Yochanan Cohen, Executive Director, Yeshiva Tiferes Boruch
Abe Auerbach, Regency Development Properties, LLC
Peter Wolfson, Esq., Attorney, Day Pitney, LLP
Enc: Exterior Lighting annotated cut sheet
Revised 11x17 BRPA Schematic Design facade, dated February 10, 2022



Andersen custom or historic salvaged door pulls with modern lockset, interior push bars by Sargent per Barrier-free code requirements for public buildings



GRILLE OPTIONS

Grille patterns are available in widths and configurations to fit any architectural style or the taste of any customer. We can match virtually any existing grille pattern, and we'll even work with you and your customers to create custom patterns.



Permanent exterior
Permanent interior
with spacer

FULL DIVIDED LIGHT

Permanently applied to the interior and exterior of the window, with a spacer between the glass.

Grille Bar Widths & Patterns



3/4" (19)



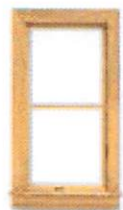
7/8" (22)



1 1/8" (29)



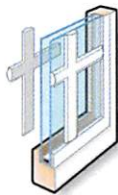
2 1/4" (57)



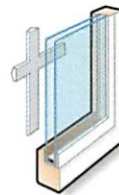
Permanent exterior
Permanent interior

SIMULATED DIVIDED LIGHT

Permanent grilles on the exterior and interior, with no spacer between the glass. We also offer permanent exterior grilles with removable interior grilles.



Permanent exterior
Removable interior



Removable interior



Finelight grilles-between-the-glass

CONVENIENT CLEANING OPTIONS

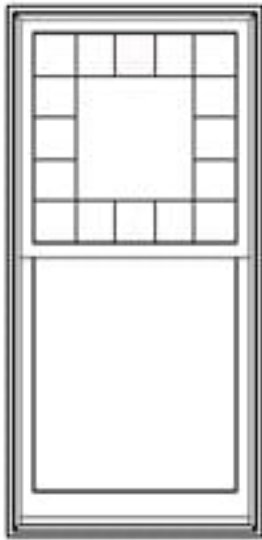
Removable interior grilles come off for easy cleaning. Finelight™ grilles-between-the-glass are installed between the glass panes, and feature a contoured profile in 1" (25) and 3/4" (19) widths.

Actual width shown.

Our 2 1/4" (57) width grille can be positioned horizontally across the center of a casement window to simulate the look of a double-hung window.

To see all of the standard patterns available for a specific window or door, refer to the detailed product sections in this product guide.

*7/8" (22), 1 1/8" (29) and 2 1/4" (57) are not available in Finelight grilles-between-the-glass. Dimensions in parentheses are in millimeters.



16 Outside
Edge Lights

WINDOWS WILL BE ANDERSEN 400 SERIES WOODRIGHT® DOUBLE HUNG UNITS WITH FULL DIVIDED LITES.

PRODUCT OVERVIEW



Double-Hung Windows

Choose Woodwright® double-hung windows that replicate the look of traditional architecture or our best-selling tilt-wash double-hung windows that are extremely energy efficient. Both are available as full-frame or insert windows, and can be part of bay window combinations. Coordinating picture and transom windows are also available.



Specialty Windows

A collection of stylish shapes to help distinguish a home's style or create a delicate accent.



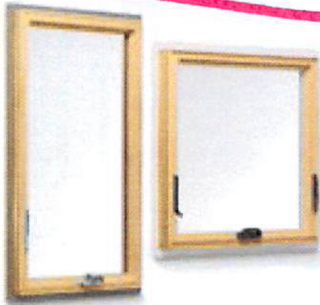
Woodwright full-frame windows come in a variety of shapes.



Our **Narroline® double-hung window conversion kit** can upgrade Andersen® Narroline double-hung windows to tilt-wash windows.



Complementary specialty windows offer 35 additional shapes and custom sizes.



Casement & Awning Windows

Casement and awning windows are energy efficient, and are built with our low-maintenance Perma-Shield® cladding. Available for new construction or replacement, as integral twin or triple units, or as part of bay or bow window combinations. Coordinating picture and transom windows are also available.



Gliding Windows

Superior energy efficiency, reliable performance and uncommon beauty. Both sash on our gliding windows open for improved ventilation.



Complementary casement windows come in a variety of shapes and in French casement options.



Frenchwood® Gliding & Hinged Inswing Patio Doors

Wide wood profiles provide the authentic craftsmanship of traditional French doors, and our Perma-Shield exterior cladding protects the unit and offers low maintenance. Add blinds-between-the-glass to conveniently control light and privacy. To learn more about other traditional- and contemporary-style Andersen door options, visit andersenwindows.com/doors.

Frame any Frenchwood patio door with **Frenchwood patio door sidelights and transoms.**



Complementary curved top patio doors, including Springline™ and arch hinged doors, are handcrafted and complement our 400 Series products.



HOME STYLE PATTERN BOOK

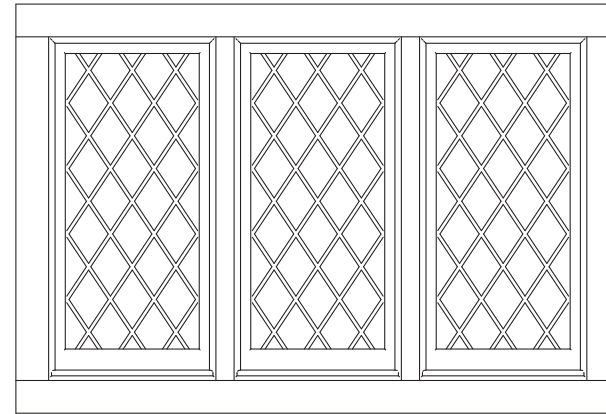
Tudor

An Old World Selection from the Andersen Style Library

Window Groupings

A group of three equally sized casement windows or double-hung windows mullled together is the most common combination. However, the number of combined windows can be as few as two or as many as five.

Casement window groupings are often mullled with transom windows of equal width, with both window types having the same grille pattern.

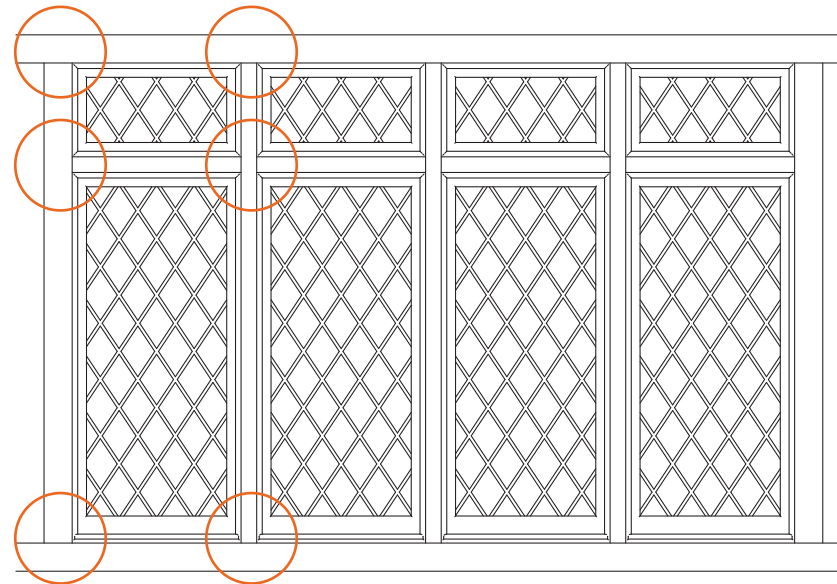


3-wide casement window grouping

• ANDERSEN AUTHENTICITY •

Every A-Series product from the Andersen® Architectural Collection features common design elements to make creating authentic window groupings easier.

With A-Series products, you can specify different window types and still have their sash design, grille profiles, glass setback, sight lines and frame depth match and align perfectly.



4-wide casement window grouping with transoms.

Trim is integral with half timber house trim.

Circled areas – See Typical Trim Conditions details on page 13.

Sash & Grille Design

Tudor style windows offer rich character that greatly contributes to the overall look of the home.

The sash thickness is traditionally $1\frac{3}{8}$ " with a deep glass setback placed near the middle of that measurement. Additionally, grille and sash profiles are alike on the interior and the exterior respectively.

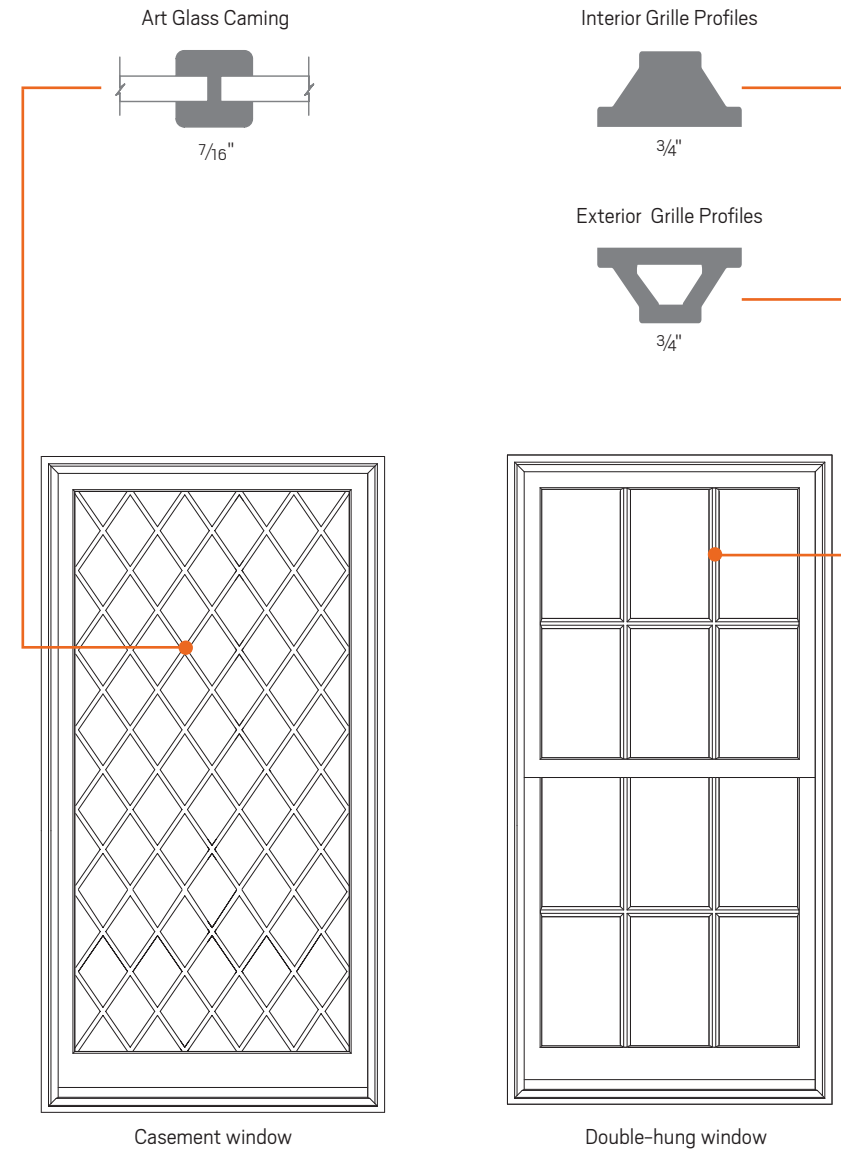
For double-hung windows, the top rail of the sash should be the same width as the stiles. Also, the bottom rail should be wider than the stiles and the top rail.

• ANDERSEN AUTHENTICITY •

Andersen® A-Series windows were designed in conjunction with leading architects. As such, double-hung, casement and picture windows feature these sash and grille details for architectural authenticity:

- Bottom rail of the sash is wider than the stiles and top rail
- A deep glass setback for historical accuracy
- Grille profile faces are flush with the sash face to simulate traditional wood muntins
- Exterior grille profiles accurately simulate the look of putty glazing on a historic window
- Diamond pattern art glass with metal caming and dual-pane insulated glass available for a historically authentic appearance

Andersen products allow you to specify custom grille patterns, making it easy to create an exact match in historical applications.

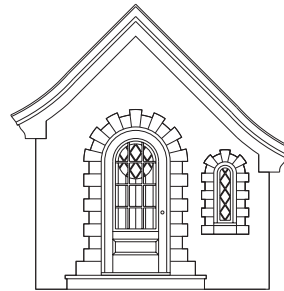


Main Entries with Trim

The following two main entry types are commonly found in Tudor homes:

Type A:

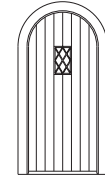
- No covered porch
- Door is near the surface of the building
- Door shapes are either half-round archtopy or Tudor archtopy
- A narrow window placed 1–2 feet from the entry door



Type A main entry



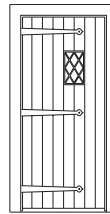
Type B main entry



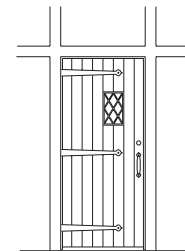
Main entry door
(out of context)

Type B:

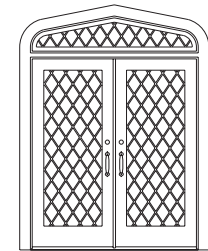
- Exterior, unheated, covered porch
- Half-round arch or Tudor arch opening to porch
- Door is set back inside the entry porch
- Door shapes include half-round archtopy, Tudor archtopy and rectangular flattopy
- No small window near door



Quintessential
side door



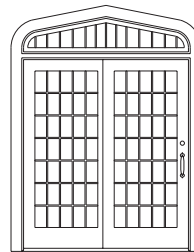
Side door with
half-timbering trim



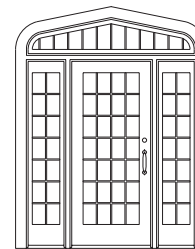
Standard hinged patio
doors with custom
Tudor transom window

Auxiliary Entries with Trim

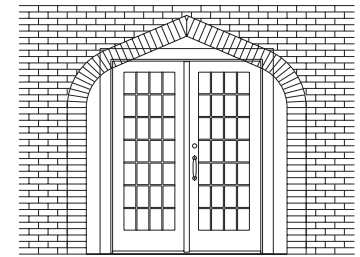
Side doors are typically rectangular and have a small glass area with diamond grilles in the upper portion. For rooms where more natural light is desired or to visually connect indoor and outdoor spaces, hinged patio doors are ideal, although gliding patio doors are also alternatives. While doors featuring large expanses of glass historically had rectangular grille patterns, diamond-patterned grilles are also appropriate.



Standard gliding patio
door with custom Tudor
transom window



Standard patio door &
sidelights and custom
Tudor transom window



Rectangular patio door set
back inside shallow
Tudor arched opening